

Sierra Club YODELER

THE NEWSPAPER OF THE SAN FRANCISCO BAY CHAPTER ♦ WINTER 2019-20

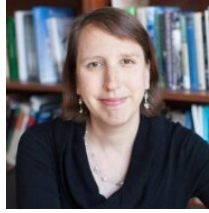


MEMBERS,
VOTE FOR YOUR
LOCAL SIERRA
CLUB REPS!
P. 18

THIS WINTER, LEARN SNOWCAMPING WITH THE SIERRA CLUB!
♦ KATHERINE HOWARD'S "THE GHOST OF CHRISTMAS PRESENT(S)" ♦
OUR VISION FOR PRIORITY DEVELOPMENT AREAS & URBAN INFILL
♦ A CONVERSATION WITH BILL SMITH: GIVING BACK TO THE CLUB ♦

LETTER FROM THE DIRECTOR

When I was growing up in New England, snow days were like a national sport. If there was even a slight dusting, all the kids would dash to the television to watch the news to see if school was canceled. If it was, the rewards were big—sledding and snow forts all morning, followed by cartoons and hot chocolate in the afternoon. There were few things that were more delightful.



Moving to the Bay Area, I knew that this type of treat wouldn't be possible for my own kids. But there were other wonderful things to enjoy: trips to the beach on a hot October day; flowers blooming year round; and access to some of the most impressive outdoor space the world has to offer. I didn't realize, though, that their childhood would be so different; not because of the location of our home changing, but instead the changing climate.

You see, my oldest son was born into the drought. He didn't experience a good puddle-stomping rain storm well into his third year of life. Now when he sees rain he finds it beyond peculiar, asking me, "What is this nonsense?" Similarly, each year since my younger son was born, we've been hit by some of the most extreme weather I've ever seen in my life—wildfires and smoke that are ravaging California. But to my kids and all of the kids in the Bay Area, this is normal—and they are right, this is indeed the new normal.

In September we saw one of the largest climate marches ever with the Climate Strike, as youth led the charge for addressing climate change. These marchers filled me with hope—the youth are demanding action on climate change. Our role here at the chapter is to listen to these voices, hold them up, and act to ensure that the future they fear is not the one they will see. As we enter a new decade and an important election year, I hope you will join me in fighting for the future we all want to see: a safe, healthy and sustainable future for everyone here in the Bay Area and across the world.

Minda Berbeco
DIRECTOR

INSIDE THIS ISSUE

- Chapter News* ♦ 3–8
- Campaign Updates* ♦ 8–13
- Outings Calendar* ♦ 14–15
- Special Events & Classes* ♦ 16–17
- Chapter Election Supplement* ♦ 18–28

Sierra Club YODELER

VOLUME 82 • NUMBER 4
Winter 2019–20

Sierra Club Yodeler (ISSN 8750-5681) is published quarterly by the
Sierra Club
San Francisco Bay Chapter

2530 San Pablo Ave, Suite I
Berkeley, CA 94702
Monday–Thursday, 10 AM–5 PM
Friday, 10 AM–2 PM

Email: info@sfbayclub.org
Phone: (510) 848-0800
Website: www.sierraclub.org/sfbay

GUEST EDITOR
Allen Jang

ADVERTISING
Jim Rohrlack
jim@henryhousemedia.com

DESIGN
Courtney Andujar
www.courtneyandujar.com

POSTMASTER
Send change of address to Sierra Club Yodeler, 2530 San Pablo Ave., Suite I, Berkeley, CA 94702. Periodicals postage paid at Berkeley, CA, and additional mailing offices. Printed at Fricke-Parks Press, Inc., 33250 Transit Ave., Union City, CA 94587. © San Francisco Bay Chapter Sierra Club, Sierra Club Yodeler.

SUBSCRIPTIONS
Annual Sierra Club dues are \$39 and include a subscription to the *Yodeler* for Bay Chapter members. Annual subscriptions for non-members and for members of other chapters are \$8. Send check payable to "Sierra Club" to: Sierra Club Yodeler Subscriptions, 2530 San Pablo Ave., Suite I, Berkeley, CA 94702. Specify preferred starting issue.

ADDRESS CHANGES
Sierra Club Membership Services
PO Box 421042
Palm Coast, FL 32142-1042
address.changes@sierraclub.org
(415) 977-5653

COVER PHOTO
Western Snowy Plover (*Charadrius nivosus*) landing, while challenging another Snowy Plover. Mike Baird.



WINTER 19-20 CHAPTER NEWS



PHOTO CREDIT; 2014 HOLIDAY OPEN

Come to the Bay Chapter holiday party!

FRI, DEC 13TH, 6:00–9:00 PM

CHAPTER OFFICE, 2530 SAN PABLO AVE., BERKELEY

Join Members and friends to toast the work of the San Francisco Bay Chapter of the Sierra Club and the season! Please bring finger food—savory or sweet—and beverages to share. There will be live music; a free raffle; gifts; and, of course, lively conversation! Organizers will provide the plates and cups. Family and friends are welcome.

.....

Vote for your local Sierra Club representatives!

Ballot on page 28

Help set the direction for the Sierra Club San Francisco Bay Chapter by voting for the Executive Committees of the chapter. The Sierra Club is a powerful organization, and is democratically run by the members. There are lots of important decisions to be made about climate, wildlife, development, sustainable energy, equity and more—in each of our communities. Executive Committee members make decisions on policy and advocacy for each chapter and group.

You can read about the candidates in this issue of the *Yodeler*.

All members who live in Alameda, Contra Costa, San Francisco, or Marin Counties, and who are registered as a member of record in the Club database, are eligible to vote.

You may choose to vote by paper ballot or online. If we receive both electronic and paper ballots for the same membership number, only the electronic ballot will be counted. All ballots must be received before Friday, December 13th at 2 PM. Voting instructions are on page 18 and your ballot is on page 28. You can also vote online at www.sierraclub.org/san-francisco-bay/2019-chapter-elections.



PHOTO CREDIT; SOO-RAE HONG

Plant a tree with the Sierra Club!

Looking for a small but impactful way to help in the fight against climate change and green your community over a weekend? Volunteer to plant trees with the Sierra Club! Once a month, our Tree Team plants trees in sidewalks all around Oakland. As these trees grow, they help to improve air quality, sequester carbon, and improve the environmental conditions of our neighborhoods. Many of the beautiful large trees you see along sidewalks are the result of volunteer-led efforts like ours, and we still have so much more to do.

We hold planting events once a month, from 10:00 AM to 2:00 PM. No experience is required, but volunteers should be ready to do some digging and get a bit dirty. We meet at our staging area in the parking lot of Epic Charter School, near Fruitvale BART. The trees will be in other places around town, so please be on time so we can check in before we disperse. Please register in advance on the Bay Chapter's online outings calendar at sierraclub.org/sfbay/events, or our Meetup group at meetup.com/sanfranciscobay, if you would

like to join us in making a difference. These are the planting dates for 2019 and 2020:

- ◆ October 13, 2019
- ◆ October 27, 2019
- ◆ November 24, 2019
- ◆ December 15, 2019
- ◆ January 19, 2020
- ◆ February 9, 2020
- ◆ March 15, 2020
- ◆ April 19, 2020
- ◆ May 17, 2020
- ◆ June 14, 2020

We are also very much in need of volunteers for the following roles:

- ◆ Folk who have trucks to help transport trees and materials to their locations.
- ◆ Arborists, landscape architects, or other related professionals to assist with leading events.

If you are able to help in these roles, please contact sctree-planting@gmail.com.

We also need volunteers for regular tree maintenance such as watering, trimming, pruning, stake repair and stake removal. Any 3 hour commitment during daylight hours is welcome. Arthur Boone, the Tree Team founder, is now leading our tree maintenance group, and welcomes new volunteers. Come to learn; stay to serve. Reach out to Arthur at arboone3@gmail.com or (510) 910-6451. No texting or Facebook, please.

.....

Learn snowcamping with the Sierra Club!

Different people come to snowcamping for a variety of reasons. Do any of these sound like you?

- ◆ You wish the backpacking season didn't end with the first snow.
- ◆ You want to learn to build an igloo or snow cave—and sleep in it!
- ◆ You are eager to get to the outdoors early in the season when there is still snow in most areas.
- ◆ You've had wilderness permits but the weather has stopped you or made you change your plans.
- ◆ You're an experienced backcountry skier who wants to extend your season.

- ◆ You're training for higher elevation hikes where snow can be an issue and you have questions on how to prepare.
- ◆ You're afraid that you don't have the appropriate gear for cold weather in the backcountry where weather is too cold?
- ◆ You want to see our parks in their winter attire.

If any of the above describes you, come join the Bay Chapter's Snowcamping Section for the upcoming 2020 season training program. For us, there is no "off" season!

The snowcamping training program includes an orientation day (this year on January 11th, 2020) and two mandatory field trips (multiple days offered). We will give you the basic knowledge of how you can be prepared for colder nights while outdoors, what the right gear is to keep you warm and safe, how to handle unforeseen weather and snowy terrain, and how you can build snow structures as shelters. Our training is in a group format with leaders and assistant leaders to escort you on the field trips (adults, families and youth options available).

Ever wondered how people stay warm while sleeping on snow? How to carry all that gear? We'll answer these ques-

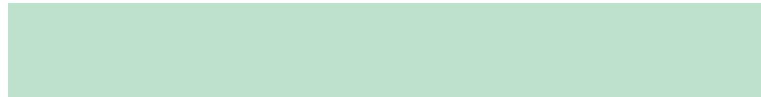


PHOTO CREDIT: JAMSHEED WANIA

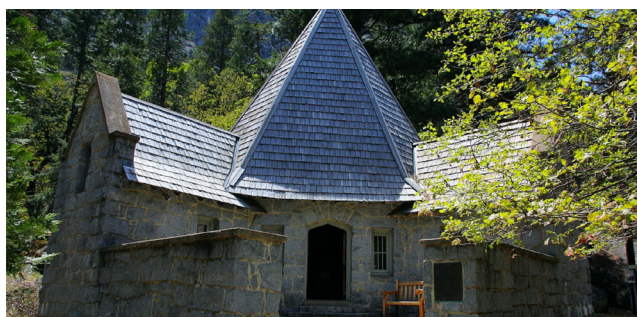
tions and many more. Our snowcamping training is now in its 51st year, having prepared more than 4,000 people how to extend their backpacking adventures to the winter months in a safe way.

Our trainings are hands-on, including practical experience in the field. The group experience allows each student to see and experience a variety of techniques and equipment.

We will begin accepting applications on October 15th, 2019. The early-bird application deadline is November 30, 2019, with a final due date of December 13, 2019 (at 5:00 PM). The mandatory full-day classroom training is January 11, 2020. Trip dates vary by group. Prospective students should be experienced backpackers in good physical shape. A limited number of scholarships are available. Find more information at www.snowcamping.org.

LEARN MORE AT A FREE INFORMATIONAL CLINIC!

If you want to learn more about our program, come to a free informational clinic at an outdoor store near you! There are over 15 clinics scheduled in all parts of the Bay Area. See the full schedule at snowcamping.org.



Volunteer Opportunity in Yosemite National Park

The Yosemite Conservation Heritage Center (formerly known as LeConte Memorial Lodge) is a National Historic Landmark that represents the rich heritage of the Sierra Club in Yosemite National Park. The building houses interpretive displays, a children's library, a natural history library, and evening programs.

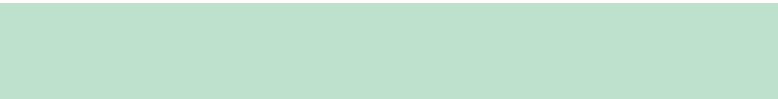
Since 1904, a curator and Sierra Club volunteers have provided information about the Sierra Club, the YCHC, and Yosemite National Park to park visitors. Today, each season, the YCHC welcomes over 15,000 visitors to the Sierra Club's home in Yosemite Valley. *Volunteers are currently being sought to fill the 2020 season.*

Volunteers spend a week from Saturday to Saturday in Yosemite National Park assisting the Club's curator, interacting with park visitors and carrying on the Sierra Club tradition of encouraging visitors to enjoy, explore, and protect our natural environment.

The volunteer workweek consists of up to 25 hours of service in the YCHC, with Monday and Tuesday free days to explore Yosemite. This opportunity includes free admission to YNP and free camping in a group campsite with the other YCHC volunteers. Restricted to volunteers only, no family members, friends or pets are permitted. Camping is limited to tents only and volunteers bring their own food and supplies. A brief application, liability waiver, and background check are required. Potential volunteers must:

- ◆ Be current Sierra Club members;
- ◆ Be outgoing and comfortable interacting with park visitors;
- ◆ Have visited Yosemite within the last two years and have current park knowledge;
- ◆ Be familiar with current Sierra Club programs and initiatives; and
- ◆ Be able to stand up for 3 hours per day.

To become a volunteer at YCHC, please contact Bonnie Gisel, curator, at bonnie.gisel@sierraclub.org.



SIERRA CLUB FOUNDATION
VEHICLE DONATION PROGRAM

Donate Your Vehicle

Help Fund Grassroots Activism

Donating is Easy!

Clean out your garage and help out the environment by making a significant contribution to our vehicle donation program.

Your donation will go towards raising awareness of our efforts to protect and improve the natural environment around us. We make the process of donating your old car or unused vehicle both simple and easy. Plus, you may even qualify for a tax deduction.



1. Give us a call today!



2. Schedule your free pick up



3. Receive a donation receipt

1-844-6-SIERRA | scfch.careasy.org

Why I give

WILLIAM (BILL) SMITH

How long have you been a member of the Club?

Since 1988, when I moved back to the San Francisco Bay Area from my four-year assignment in the U.S. Army Chemical Corps at an U.S. Army food, clothing and shelter research lab near Boston.

What made you interested in the local chapter's work?

After I accepted a job as an environmental engineer at the Chevron Research Center in Richmond, I volunteered for the San Francisco Bay Chapter's toxics committee. That led to my involvement in the regional committee that prepared the Bay Area for the closure of several military bases, including the Alameda Naval Air Station. Next, as a member of the Alameda County Planning Commission, I watched the Sierra Club lead the 2000 campaign that resulted in Alameda County's urban growth boundary line. The Club's urban infill policy made it clear that the closing Alameda and Concord naval air stations were much better locations for sustainable housing than undeveloped grasslands in unincorporated parts of the county.

Why did you decide to include the Club in your legacy giving?

The Sierra Club has the grassroots reach needed throughout the United States to effect difficult, necessary and lasting cultural change. The Club is promoting the change from a linear economy that extracts and then disposes of raw materials to a circular economy that keeps materials constantly circulating by reusing and recycling them. The Club is also promoting healthier neighborhoods where people catch buses or bicycle and walk instead of driving. The Club's urban infill policies favoring dense development are efficient and cost-effective engineering approaches needed to both house the homeless and to provide more affordable housing. All of these policies are things that I feel strongly about, and I'm glad to contribute any way that I can.

Anything else you want to share?

As co-chair of the Environmental and Social Justice Committee of the Sierra Club California's Conservation Committee my goal is for the Club to become a nationally rec-



ognized leader for change that enables the economically or socially vulnerable to explore, enjoy and protect the planet. Change is needed as California's homeless count rose 10% from 118,000 in 2016 to 130,000 in 2018. I am working in the Sierra Club to expand on the Veteran's Administration Housing First program, which has reduced the number of veterans experiencing homelessness by almost 50% since 2010. Veterans and residents with homes are better able to explore, enjoy and protect the environment than those without.

If Bill's story inspires you to include the chapter in your legacy giving, please contact Development Manager Matt Bielby at (510) 848-0800 ext. 321, or matt.bielby@sierraclub.org.



PHOTO CREDIT, TOP & BOTTOM; JANE RICHEY (JANERICHEY.COM)

Thank you to the sponsors of our 2019 David Brower Dinner!

DEFENDER SPONSORS

- ◆ SPRAWLDEF
- ◆ Regional Parks Foundation

GUARDIAN SPONSORS

- ◆ Oakland Athletics

ALLY SPONSORS

- ◆ Citizens for East Shore Parks
- ◆ BMWL and Partners

PARTNER SPONSORS

- ◆ Solaria
- ◆ Port of San Francisco
- ◆ Port of Oakland
- ◆ East Bay MUD
- ◆ AC Transit
- ◆ BART
- ◆ Bay Alarm
- ◆ Roger Williams & Alice Chung
- ◆ William (Bill) Smith
- ◆ Dean Preston
- ◆ Oakland City Attorney Barbara J. Parker
- ◆ Minda Berbeco & William Fertman
- ◆ Honorable John Sutter
- ◆ NextGen California
- ◆ Golden Gate National Parks Conservancy
- ◆ SEIU 1021

GRASSROOTS SUPPORTERS

- ◆ Councilmember Gabe Quinto
- ◆ Councilmember Rebecca Kaplan
- ◆ Councilmember Sophie Hahn
- ◆ Councilmember Nick Pilch
- ◆ Supervisor Damon Connolly
- ◆ Arthur Feinstein & Ruth Vose
- ◆ Senator Nancy Skinner
- ◆ Assembly Member Rob Bonta
- ◆ Conservation Society of California
- ◆ 350 Bay Area Action
- ◆ Law Offices of Stuart Flashman
- ◆ Holland & Knight
- ◆ Clifford Moss
- ◆ Vicky Hoover
- ◆ Cesar Zepeda
- ◆ Elizabeth Echols
- ◆ Former Councilmember Jovanka Beckles
- ◆ Dale & Toni Wise
- ◆ Maritessa Bravo Ares & Hon. Igor Tregub
- ◆ BlueGreen Alliance
- ◆ Incredible Adventures
- ◆ MCE
- ◆ Rainbow Grocery
- ◆ ILWU Local 34
- ◆ League of Conservation Voters of the East Bay
- ◆ Congresswoman Barbara Lee
- ◆ Drake's Brewing
- ◆ Upstream





Support us with a literary walk on the John Muir Trail!

Local author David Rice will donate all the proceeds from his new book, *Pilgrim on the John Muir Trail*, to the chapter for our conservation work.

The book is written in tanka verse, a form of classical Japanese poetry that's very different from free verse poetry and very accessible to readers. Here are two examples:

on a stream rock	if the science guys
purifying water	want to figure out
a young hiker	if lakes and peaks
calls me <i>sir</i> as she passes	can open the mind ...
I'd forgotten my age.	well, I did the experiment.

This book captures what it is like to hike the John Muir Trail: the hardships, the joys, and the self-contemplation. Purchase *Pilgrim on the John Muir Trail* at <http://bit.ly/JMTPilgrim> today for \$12, plus shipping. Your purchase will support John Muir's legacy here in the Bay Area.

Update from the Coal Front Lines

TERILYN CHEN

Together with our partners in No Coal in Richmond, we have been working for months to get the word out about coal and petroleum coke dust pollution in Richmond and build community support for the Richmond Coal Ordinance. We have gone door-to-door to inform and learn from neighbors and friends, presented at neighborhood council meetings and in classrooms, met with decision makers, and collected 2,000 letters from residents urging the City Council to protect communities from coal and petcoke pollution.

Last year, the Levin terminal handled nearly one million metric tons of coal. At the terminal, the dirty fossil fuel is stored in massive uncovered piles close to where people live, work, and play. Coal dust that is released into the air during the terminal's operations contains substances known to pose severe harm to human health, including arsenic, lead, chromium, and other toxic heavy metals¹. Exposure to coal dust

is linked to decreased lung capacity, increased childhood bronchitis, asthma, pneumonia², emphysema³ and heart disease⁴. Pet coke, too, is linked to a number of cardiovascular and respiratory problems, and releases higher amounts of fugitive dust⁵.

As this issue is going to press, the City Council is voting on the ordinance that would address this serious threat to the health and safety of local communities and the environment. Introduced by Councilmember Eduardo Martinez, the ordinance would also prevent future coal and petcoke operations in the city. To see how we did and further developments on the campaign, please visit the chapter's blog at www.sierraclub.org/sfbay/blog and No Coal in Richmond's website at <https://ncir.weebly.com/>.

1. Aneja, Viney, "Characterization of Particulate Matter (PM₁₀) in Roda, Virginia," 2008.
2. Brook, Robert, et al, "Particulate Matter Air Pollution and Cardiovascular Disease: An Update to the Scientific Statement of the American Heart Association," May 2010.
3. American Thoracic Society. "Emphysema Severity Directly Linked To Coal Dust Exposure." ScienceDaily. ScienceDaily, 24 July 2009.
4. Landen, DD, et al, "Coal Dust Exposure and Mortality From Ischemic Heart Disease Among a Cohort of U.S. Coal Miners," The National Institute for Occupational Safety and Health (NIOSH), 2011.
5. CDM Smith, "City of Chicago Fugitive Dust Study," 2014.

The ghost of Christmas present(s)

KATHERINE HOWARD

Ruth Abbe has taken the problem of trash to heart. She inherited her obsession with garbage from her father, who once said that if he hadn't become a surgeon, he would have gone into dealing with trash. That was in 1987, when the famed garbage barge along the east coast of the US was wandering from port to port, looking for a place to dump New York City's excess trash.

Abbe has participated in various campaigns for sustainable recycling and is now the Chair of the Sierra Club California Zero Waste and Recycling Committee. According to Abbe, the zero waste approach is "one of the fastest, cheapest, and most effective strategies to protect the climate."

How much of an impact can limiting waste have? Quite a bit, it turns out. The products we use create an enormous waste stream from production to shipping to arriving at our homes. Recycling is important, but the real key to cutting down on waste is to stop production at the source. According to Abbe, for every ton of municipal solid waste that we produce, there are 71 tons of 'upstream' waste generated. We don't see the additional 71 tons, because it usually occurs far from where we live.

One simple way we can influence the world wide impact of waste is to purchase fewer products. It may seem that I am being a bit of a Grinch to mention this during the holidays, when consumerism reaches a fevered peak. On the other hand, maybe this is the best time to talk about it. Changing a few habits might even lead to new family traditions that can be shared for a much brighter future for the earth.

Abbe suggests that we review our traditions in view of their deeper meaning. Gift-giving is done to express generosity and affection; its goal is not to fatten a corporation's bottom line. Decorating our homes celebrates family life

and wards off the winter's darkness; it can also express stewardship for the earth and the desire to have a renewed and reenergized nature in the spring, when the light returns.

Decorating and gift-giving both lend themselves to simple, environmentally-friendly upgrades. You have probably already replaced your decorative lights with LEDs. When you go to sleep, program light timers to turn off those outdoor lights that your neighbors love (or not). Darkness at night also protects wildlife that is harmed by too much lighting.

Are you a candle person? Most candles these days are made of paraffin, a petroleum by-product created from sludge waste when crude oil is refined into gasoline. How romantic—not! Instead, try beeswax, vegetable wax, or GMO-free soy wax candles. LED tea lights are both pretty and less likely to set the house on fire if the cat or dog knocks them over.



PHOTO CREDIT: MAMARAZZI, FLICKR

Next, the Christmas Tree. If it is not Christmas for you without a live tree, Abbe recommends shopping at a tree farm with responsible practices (no pesticides, no old-growth clear-cutting). But however your fresh tree is grown, recycling is de rigeuer. For San Franciscans, Recology's website gives collection dates and instructions on how to prepare your ex-Xmas tree for recycling. Recology ac-

cepts flocked trees but other recyclers may not. Check with your local recycling center to be sure.

Living Christmas trees are another option. Friends of the Urban Forest (FUF) lends out living trees to "adopt" for the season. After the holidays, the trees will be planted to grace our streets. Or you can purchase a tree at a nursery and then plant it in your backyard after the holidays. Be forewarned—evergreens can grow quickly and get big! But that can be a good thing, right?

Most artificial trees are made of PVC and, unfortunately, the global pollutant dioxin is a byproduct of the PVC life-cycle. However, if reused year after year, an artificial tree has less impact over time. Or perhaps you can pick one up secondhand! Abbe's "family tree" is a hand-me-down from her husband's grandmother.



PHOTO CREDIT; SHUZO SERIKAWA, FLICKR

Shopping for used holiday decorations is a great trash saver. Thrift shops trot out their seasonal treasure troves each holiday.

Or go to the source: Nature. Branches, pine cones, and crafts handmade from wood or other natural materials all express the holidays and most can be composted or, even better, tucked away in your own treasure trove for next year.

Selecting gifts is a challenge for all of us. A good first step is to find out diplomatically if someone actually wants a specific gift. Did you know that around 35% of Americans have an unused holiday gift hidden in their closets?

Abbe recommends buying natural products, fair-trade certified items, and organic products. Food is a great gift—and is usually used up.

Other environmental gifts include flatware that can be carried with you to use in restaurants, the newly popular metal straws in place of the evil plastic ones that are being phased out, and reusable coffee mugs with tops, for the caffeine aficionados.

Toys are problematic—some may be made of toxic plastic and have lead paint. Search online for subjects such as "Trouble in Toyland" to learn more.

Buy local. Buy local. Buy local. If you have to order online, try to combine items into one order, and choose the slowest shipping speed. Emissions are much higher for items shipped by air compared to land or, best yet, water.

And now, the time has come to wrap your gifts. But wait—those fun metallic, glittery, plastic, or glossy wraps are usually not recyclable or compostable. Instead choose recycled paper, or at a minimum, paper that can be recycled. Better yet, match the wrapping to the gift and make it part of the gift—wrap kitchen tools in a kitchen towel, a humorous book in the Sunday funnies, or clothes in a cloth shopping bag.

Not everyone wants more "stuff." Try gift certificates for classes, meals, travel, activities or an hour or two of your time helping friends on a project.

Abbe suggests that we think about our choices as we go through the season and see how we can cut back on the waste that is generated by our consumer-driven society. Try one or two of her suggestions; perfection is not required.

- ♦ Learn more about the Sierra Club California Zero Waste Committee: <https://www.sierraclub.org/california/cnrcc/zero-waste>
- ♦ A good start for Zero Waste information is at the Global Alliance for Incinerator Alternatives: <http://www.no-burn.org/about-gaia/>
- ♦ Friends of the Urban Forest's tree program: www.fuf.net/greenchristmas

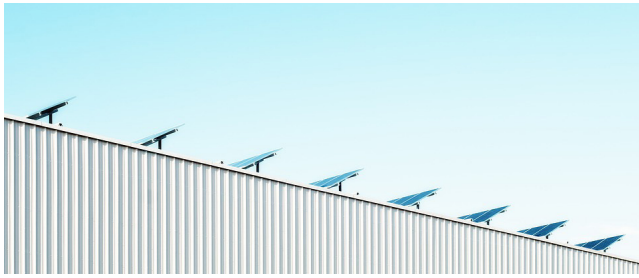
Katherine Howard is a local open space and environmental advocate who serves on the Executive Committee of the Sierra Club's San Francisco group. This article was first published in the Castro Courier.



Climate Resiliency through Building Electrification

MELISSA YU

Bay Area cities are leading the way to phase out gas in homes and buildings. Local leaders are driven by the health, safety, and climate risks associated with gas infrastructure. As you may have read in our last issue, Berkeley was the first city in the nation to adopt a natural gas ban ordinance for all new construction. This approach is unique and different than other city's as Berkeley used their police powers to prohibit new gas lines for public health and safety reasons. Other cities traditionally approach this through the reach code pathway. Reach codes are used when local cities implement building codes that go beyond state code requirements. The greatest opportunity for improvement is at the time of initial construction as cost of all-electric buildings typically cost less to build than their conventional counterparts. We are now seeing more than 50 cities and counties in California explore building codes and ordinances to support all electric infrastructure in new construction.



Go solar and support your local Sierra Club Chapter
\$1,000 rebate for you, \$500 for the Chapter

SUNPOWER®



Visit bit.ly/sunpowerforthebay to get your free quote today!

This transition to all-electric infrastructure amidst the public safety power shut-offs may make some question whether having an all-electric house makes sense. However, gas appliances like gas water heaters, furnaces, dryers, and stoves are actually similarly vulnerable to power outages as these appliances typically rely on electricity to ignite systems. The advantages of an all-electric system greatly outweigh this slight disadvantage, as modern all-electric homes can be more resilient in an outage than a modern gas run home. For instance, heat pump water heaters can use electricity from rooftop or community solar to heat and store water so families can have hot water even if the grid is down. Studies have also found gas systems take 30 times longer to restore than the electric system after natural disasters.

Without proactive policies to manage the transition away from gas, low-income families would be the last to transition off gas because renters do not have control of what fuel heats their homes. We cannot wait. Aging gas pipelines cannot withstand the impacts of climate change and utilities cannot withstand the cost of maintaining aging infra-

structure as they undertake other safety upgrades. According to the U.S. Pipeline Hazardous Materials Association, over the past five years, roughly every 4 days there was a gas pipeline incident that either killed someone, sent someone to the hospital, and/or caused a fire and/or explosion. Gas leaks are also particularly hazardous for us in the Bay Area as we live in an earthquake-prone area, and leaking gas lines can fuel fires after earthquakes.

Currently, developers support this concept as cost can easily be offset by solar panels, which can zero out utility bills. The challenge is overcoming individuals' preferences for cooking with gas cooktops and negative perceptions of electric coil cooktops. Fortunately, modern induction cooktops and stoves are much more efficient than gas stoves.

The recent power outages serve as a reminder of how crucial our efforts are to find pathways to make our communities more resilient to avoid catastrophic disasters.

To learn more about how to get involved in this effort, email Melissa Yu at melissa.yu@sierraclub.org.

CUT HERE

Like what you're reading? Support your local chapter's work in the Bay Area!

\$25 \$50 \$100 \$200 Surprise us! \$ _____

Please make your check payable to **Sierra Club San Francisco Bay Chapter**, or use your credit card.

Please select a payment method: MasterCard Visa Discover AmEx

Credit Card Number: _____ Exp. (MM/YY): _____

Name on Card: _____ Signature: _____

Email (Help us save paper!): _____

Contributions to the Sierra Club are not tax-deductible; they support the Sierra Club's effective citizen-based advocacy and lobbying efforts.

RETURN INSTRUCTIONS

Cut out this card and return it (in an envelope) to:

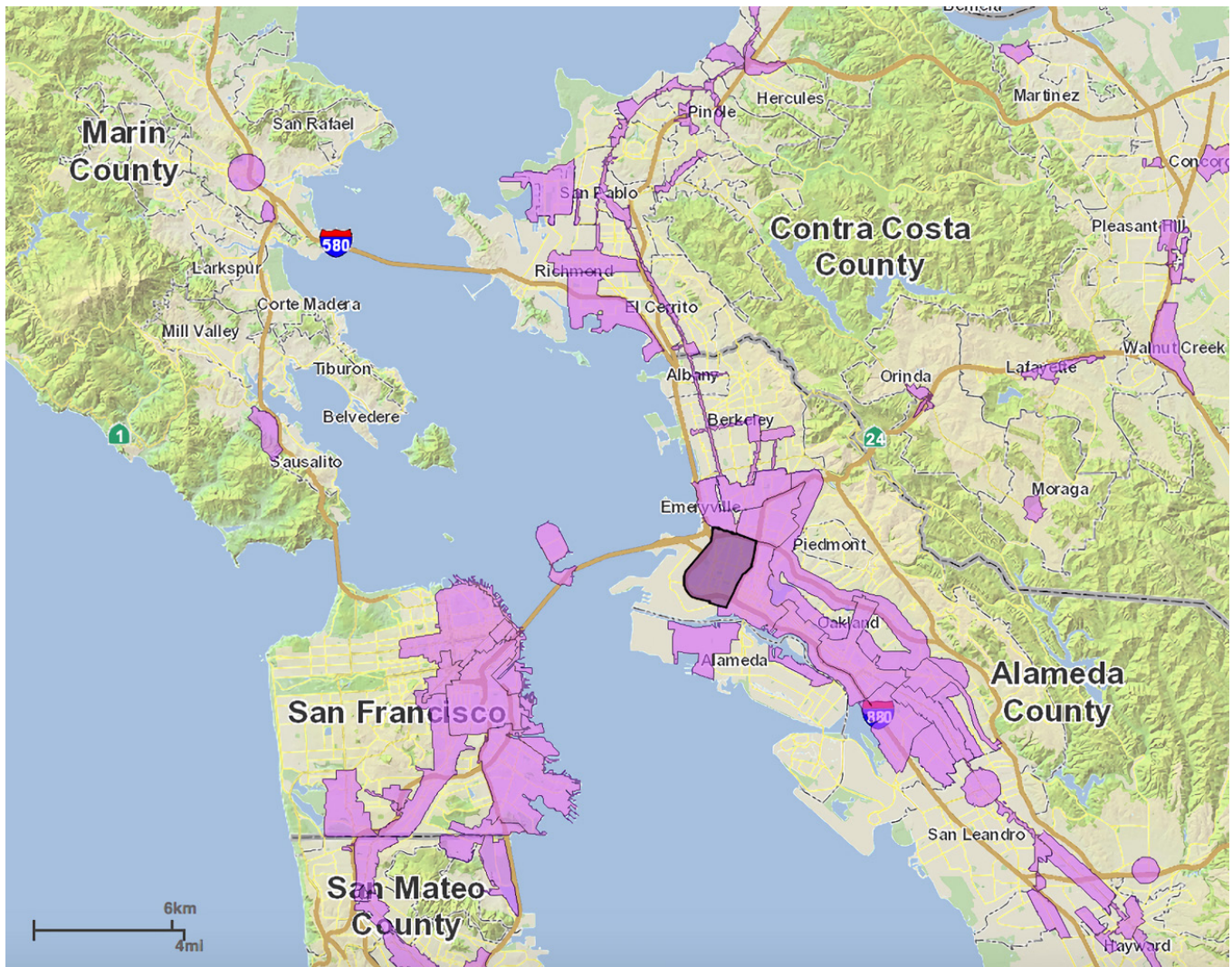


SIERRA CLUB
SAN FRANCISCO BAY

2530 San Pablo Avenue, Suite 1
Berkeley, CA 94702-2000

DONATE ONLINE

www.sierraclub.org/sfbay/donate



What are Priority Development Areas and how do they fit into Sierra Club’s vision for urban infill?

JULIA FOOTE

How we build our cities and towns has a profound effect on the causes and impacts of climate change. The Sierra Club believes that an essential strategy for reducing urban carbon emissions is supporting dense, mixed-use communities and land uses that prioritize walking, biking/scooting, or transit to meet daily transportation needs. We must also balance jobs and housing within the region to alleviate the housing crisis and ensure that people can live closer to where they

work, cutting down long commutes.

In the Bay Area we have “Priority Development Areas,” or PDAs, as a key strategy to develop our region in the most sustainable manner. PDAs are existing neighborhoods that are served by public transit and have been locally identified and approved as appropriate for additional, compact development. PDAs must be:

- ♦ Within an existing community;
- ♦ Within a half-mile of frequent transit; and
- ♦ In an area planned for future housing and job growth.

PDAs are expected to accommodate 78 percent of projected new housing production (over 500,000 units) and 62 percent of employment growth (almost 700,000 jobs) in the Bay Area through the year 2040. More than 70 city and county governments have voluntarily designated some 170 locations around the Bay Area as PDAs. The PDA strategy aims to minimize sprawl development in our green spaces

and maximize growth in transit-rich communities, which will help reduce driving and driving-related greenhouse gas emissions.

In the Bay Area, PDAs have the potential to help us implement and achieve the Sierra Club's infill strategy. PDAs serve as a development management tool to define the areas of public investment in urban infrastructure to serve dense housing, jobs and services, prevent environmentally and fiscally unsustainable development, and protect farmland, critical habitat and open space.

Sierra Club's support for successful PDAs is a natural corollary to our opposition to sprawl, which promotes automobile dependence, destroys natural ecosystems, separates people from each other, increases social inequity, reduces economic security and increases carbon emissions.

HELP YOUR LOCAL PDA BE SUCCESSFUL

We want to ensure that PDAs are successful in their goal of reducing emissions, while prioritizing equity in accordance with the Sierra Club's infill policy. To that end, we offer the following guidelines for Bay Area PDAs:

- ◆ PDAs should not only be dense, but also inclusive, so that fewer people will have to "drive till they qualify" for housing financing—preventing even more emissions;
- ◆ PDAs should be designed to make neighborhoods walkable. Neighborhoods in the city and metropolitan contexts should be linked together by convenient, high-quality transit prioritized in regional, state and national transportation expenditure plans;
- ◆ PDAs should be zoned for dense, multi-family, and mixed-use development in order to support walkability

and reduce emissions and waste;

- ◆ All land use plans should identify opportunities for adapting to climate change and build resilience across communities and physical infrastructure;
- ◆ PDAs should reject land use policies that are designed to separate people by class and race and should be developed in such a way to ensure that planning, housing and development practices don't reinforce those inequitable and racist outcomes; and
- ◆ PDAs should address past and ongoing inequity in the communities and neighborhoods most damaged by it and to fully engage the stakeholders of such communities.

Is there a PDA in your community? Check and see at tinyurl.com/sfbayPDA. Take these talking points to your city and county officials and make sure your local PDA helps ensure the most sustainable, equitable growth possible.

BACKGROUND

PDAs are key to making the Sustainable Communities Strategy required by California Senate Bill 375 a success. SB 375 focuses on incentivizing regional and local planning and building in ways that bring people and destinations closer together, with low-carbon, alternative and convenient ways to get around. It requires regional metropolitan planning organizations in California to develop long-range plans, or Sustainable Communities Strategies, or long-range plans, which align transportation, housing, and land-use decisions toward achieving greenhouse gas emissions reduction targets set by the California Air Resources Board. To learn more about how to advocate for successful PDAs in the Bay Area, email Julia Foote at julia.foote@sierraclub.org.



PHOTO CREDIT; GIUSEPPE MILO

ABOUT THIS CALENDAR

Activities listed here are abbreviated. For full listings, visit sierraclub.org/sfbay/activities. The online calendar will also include changes, cancellations, and outings submitted after the print deadline.

HIKE & BACKPACK RATINGS

Hike ratings are based on distance and elevation gain (the sum of all gains in elevation per day):

- | | |
|------------------|---------------------|
| 1. up to 6 miles | A. under 1,000 feet |
| 2. 6-10 miles | B. 1,000-2,000 feet |
| 3. 10-15 miles | C. 2,000-3,000 feet |
| 4. 15-20 miles | D. over 3,000 feet |
| 5. over 20 miles | E. over 3,500 feet |

Backpack ratings include a third digit for travel:

T. trail

1. limited/easy crosscountry
2. moderate crosscountry
3. strenuous/difficult crosscountry

WHAT TO BRING

For day hikes, always bring lunch and enough water. Consider layered clothing, sunscreen, good hiking boots with treads, and hiking poles. Non-service dogs are allowed only if specified in the listing; canine hikers should bring leashes, litter bags, and water for their dogs.

LIABILITIES

To participate on a Sierra Club outing, you will need to sign a liability waiver. To read a copy of the waiver form, call (415) 977-5630, or visit <http://tinyurl.com/outingswaiver>.

PROBLEM RESOLUTION

If you have an outing-related concern that you are not able to address via the outing's leader, please contact the chair of the sponsoring section or group. If that is not sufficient, you can contact the Activities Committee ombudsman, Seth Feinberg, at sethfeinberg@yahoo.com or (510) 969-7151, or the Chapter office at (510) 848-0800.

CARPOOLING

Carpooling helps the environment and allows people without cars to participate. If you are driving to a hike, please stop by the carpool point to pick up others. If you're a rider, pay a share of the expenses. Many activities are listed on the Chapter's Meetup site a couple weeks in advance of the event. Join the Meetup group and post a comment requesting or offering a ride at www.meetup.com/sanfranciscobay.

WINTER 19-20 OUTINGS CALENDAR

TUESDAYS

Lake Chabot Reservoir 1A hike. Scenic weekly three-mile hike followed by optional dinner at a local restaurant. **Meet** 4 PM at boathouse/cafe. **Leader** Dolores Gruenewald, (510) 351-6247 or doloresgru@aol.com. [SOLO SIERRANS]

WEDNESDAYS

Lafayette Reservoir 1A hike. We have both faster and slower walkers, or walk at your own pace. Optional dinner afterward. **Meet** 4 PM in parking lot (takes five quarters or annual pass). **Leader** Lee Cowden, (925) 934-6357. [SOLO SIERRANS]

DEC 1 • SUN

Berkeley Hills and Architecture 2A hike. An educational walk featuring hidden parks, plus many houses designed by Bernard Maybeck and other architects. Return to start by 5 PM. Any rain cancels. **BRING:** Lunch, water, and money for post-walk dinner. **Meet** 10:30 AM on grass at corner of Euclid and Bayview near Berkeley Rose Garden. **By car**, exit Interstate 80 at University Avenue in Berkeley. Go east on University to Oxford and turn left on Oxford. At Hearst, turn right. Then, at Euclid, turn left. Follow Euclid to Bayview. **By BART**, get off at Berkeley BART, walk north on Shattuck to University and proceed as in above instructions (30-40 minutes walk). **Leader** Guy Mayes, (510) 522-1590. [HIKING]

DEC 2 • MON

Luxurious Walking in Sunlight & Twilight: Being Zen Mindfulness Walk, Berkeley 1A walking. Slow luxurious walking in the illumination of the evening sun rays. We will be walking in our "being presence". Clothes for the weather may include a hat for sunlight and a jacket or outerwear for a potential, even likely, drop in temperature. Now that it is getting dark earlier, please bring a flashlight. We are tuning into ourselves during stops at different gardens and parklets. **Meet** 6:30 PM at 1853 Solano Ave, Berkeley, CA 94707. Please RSVP if you are attending so we know to look for you. **Ends** 8:00 PM. **By carpool**, meet at a parklet outside of Zachary's, near Pegasus. The address is 1853 Solano Ave., Berkeley; nearest cross street is the Alameda. **Leader** Halley Forest, sierragreenforest@gmail.com. [HIKING]

DEC 7 • SAT

Henry Cowell Fall Creek 2C day Hike 2C hike. Join Steve Bakaley on a leisurely- to moderately-paced day hike to the Lime Kilns and then on to Big Ben. Explore the Lost Empire (trail). **Distance** 9 miles. **Gross Elevation Gain** approximately 2300 ft. Any rain cancels. **Bring** lunch,

snacks, layered clothing, and plenty of liquids. There is no potable water on the route. **Meet** 9:30 AM at Henry Cowell Fall Creek Unit Trailhead. **Ends** 4:30 PM. **By carpool**, please arrange your own carpools where it is convenient for you. Recommend you use <http://www.meetup.com/sanfranciscobay/events>. Hike will be listed there 2–3 weeks prior to the event. **Leader** Steve Bakaley, slbakaley@gmail.com. [MOUNT DIABLO AND SANTA CRUZ COUNTY GROUPS]

DEC 12 • THU

Moonlight Hike Mission Peak 2C hike. Moonlight hike from Ohlone College to Mission Peak summit on the Peak Trail. Headlamps or flashlights recommended for short sections of the trail, but the objective is to enjoy hiking in the moonlight with no or very limited artificial illumination. **Level** Moderate ++ (2C). Not a beginner's hike, as this hike will be difficult for new hikers, hikers out of shape, or those with phobias about hiking at night. We will stop on a regular basis but must complete the hike by 10 PM when the park closes. This means we have 3.5 hours to complete a 7-mile hike with significant elevation gain. If you are unsure about your physical condition, please hike another day where the time required to complete the hike is not an issue. Exiting the park after 10 PM can lead to a misdemeanor charge of trespassing by EBRPD. Snow and/or heavy rain will cancel the hike. \$4.00 parking fee if you park in the Ohlone College multi-story garage on weekdays or Saturdays. Free on school holidays and if you park on Mission Boulevard, and walk onto campus. **Bring** two liters of water, lamp, snacks, layered clothing, and enthusiasm. Recommend well-fitting boots for traction and ankle support. Hiking poles may be helpful. **Meet** 6:30 PM at Mission Peak Trail Head near Parking Garage. The Pine Street Parking Garage is on the Ohlone College campus and is located on Pine Street, which is accessed off Mission Boulevard. **Ends** 10:00 PM. **By carpool**, we recommend you arrange your own carpools where it is most convenient for you. **Leader** William Yragui, (650) 642-5150 or wyragai@missionpeakconservancy.net. [SOUTH ALAMEDA COUNTY]

DEC 16 • MON

Luxurious Walking in Sunlight & Twilight: Being Zen Mindfulness Walk, Berkeley 1A walking. Slow luxurious walking in the illumination of the evening sun rays. We will be walking in our "being presence". Clothes for the weather may include a hat for sunlight and a jacket or outerwear for a potential, even likely, drop in temperature. Now that it is getting dark earlier, please bring a flashlight. We are tuning into ourselves during stops at different gardens and parklets. **Meet** 6:30 PM at 1853 Solano Ave, Berkeley, CA 94707. Please RSVP if you are attending so we know to look for you. **Ends** 8:00 PM. **By carpool**, meet at a parklet outside of Zachary's, near Pegasus. The address is 1853 Solano Ave., Berkeley; nearest cross street is the Alameda. **Leader** Halley Forest, sierra-greenforest@gmail.com. [HIKING]

DEC 21 • SAT

San Francisco Corona Heights Natural Area Workday service/stewardship. Corona Heights Natural Area in Corona Heights Park is one of more than 30 areas managed by the San Francisco Rec & Parks. More than 100 native plant species are recorded here and it is important habitat for native and migrating birds and insects. Join us for our monthly workday to remove invasive plants, nurture and/or plant native species, and perform light trail maintenance. Note that this month's workday is one week earlier because of Christmas holiday. Work is held rain or shine and all tools and gloves are provided. Children are welcome in company of an adult. **Bring** layers, closed-toe shoes and water. No signup required. No dogs allowed. **Meet** 10 AM on north side of Randall Museum (parking lot is on south side) at end of Museum Way, just off Roosevelt Way. Short walk from Castro MUNI Station. **Ends** around noon. **Leader** Russell Hartman, (650) 242-2679 or rph1917@comcast.net. [SF BAY RAINBOW SIERRANS]

JAN 1 • WED

South of Market. This is a walk among the many of the new high-rise buildings South of Market, which will include the new Salesforce Park above the new Transit Center. **Meet** 10 AM in front of the Ferry Building, near the stairs. **Leader** Gloria Navarra, (415) 731-6144. [HIKING]

MAR 15 • SUN

Backpack Beginners Course 2020 2BT backpack. The course is addressed towards people with little or no experience in backpacking, but want to explore backcountry trails and get away from the crowds. The course consists of a full-day indoor session on Sunday, March 15, including a series of short lectures, discussions, slide and equipment show, and an overnight field trip at a weekend (Saturday/Sunday) in April/May in small groups led by experienced instructors. **Costs** \$90. For participants age 12–22 a reduced fee of \$45 applies. We will refund your money if we have to refuse your application due to physical or medical conditions; if the course is full; or in the event that the Sierra Club has to cancel. No refund will be given if a participant cancels. **Bring** yourself—we strongly recommend to wait till you have attended the indoor seminar before purchasing any gear. **Meet** 9:00 AM at 314 Warm Springs Road, Kenwood, CA 95452. **By carpool**, getting to and from the course venue and the field trip location is the sole responsibility of each participant. A roster will be provided to all confirmed participants so that they can arrange ride-sharing among themselves. We recommend that riders and drivers agree in advance about sharing costs. Using public transportation is *not* an option. **Leader** Thomas Meissner, (707) 795-7980 or meissner.thomas@sbcglobal.net. [BACKPACKING]

WINTER 19-20 EDUCATIONAL PROGRAMS

Green Friday Programs

Green Fridays meet on the second Friday of the month in the Sierra Club San Francisco Bay Chapter's office at 2530 San Pablo Ave., Berkeley. Doors open at 7:00 PM; the program runs from 7:30 to 9:00, including questions and discussion. Refreshments are served. A \$3 donation is requested but not required. Our programs present speakers and topics discussing the most important environmental issues of our time. All are welcome—Sierra Club members as well as nonmembers. **Contact Leader Joanne Drabek, joanner892@gmail.com.**

FRI, DEC 13 • PROGRAM CANCELED

Please join us for the Holiday Party, beginning at 6:00 PM!

FRI, JAN 10 • THE ROOTS OF THE CLIMATE CRISIS

Join Dr. Douglas Kenning as he explores the roots of our climate crisis. Human-caused climate change is an old story, beginning wherever humans began populating an area in large numbers and

.....



PHOTO CREDIT; LINDA DE YOUNG

Inspiring Connections Outdoors HIKE, KAYAK, CAMP, BACKPACK

Volunteer with ICO to get underserved urban youth outdoors! We are always looking for motivated individuals to help make these opportunities possible. Learn more at SFBayICO.org or email Chair@sfbayico.org.

especially since the beginnings of agriculture in the Neolithic. The Mediterranean is the best place to watch this happen and the story begins in the first myth that we have from mankind—Gilgamesh. From the beginnings of civilization, through the various societies of the Near East, through the Greeks and Romans, agriculture and the uses of wood (heating and cooking stoves, pottery kilns, metallurgy forges, homes, and ships) devastated Mediterranean forests and changed the climate irrevocably. The results were repeated wars, social collapse, and refugees. Wars, collapsing societies, and refugees remain driving forces in the Mediterranean today, and climate projections for this next century do not look good. This is our story.

Douglas Kenning (PhD, Edinburgh) has been a biologist, actor, army officer, Manhattan taxi driver, academic administrator, writer, and university professor in Tunisia, Japan, and Italy. He divides each year between the Bay Area, lecturing on Mediterranean histories and cultures, and Sicily, where he leads small-group historical and myth-themed tours.

San Francisco Dinners

All programs meet at Grace Lutheran Church, 3201 Ulloa St. at 33rd Ave. for social hour at 6 PM, dinner at 6:50 PM (includes coffee and dessert), and program at 7:50 PM. **To reserve**, send a check for \$24 made out to "Sierra Club, S.F. Bay Chapter" to Gerry Souzis at 1801 California St., #405, San Francisco, CA 94109. Please indicate the month of the dinner and the number of people you are paying for. A phone number would be useful in case of some unexpected cancellation. It is most convenient for us to receive your check 4 days before the scheduled dinner. Non-members welcome. **Please bring** wine or soft drinks. Glasses and ice available. Let us know if you wish for a vegetarian dinner. **Contact Leader Gerry** with questions between 4 and 9 PM at (415) 474-4440 or gsouzis@hotmail.com.

THUR, JAN 16 • THE TOP TEN HIKES OF YOSEMITE WITH MATT JOHANSON

Hike to the top of Half Dome, Yosemite's most coveted landmark. Climb Mount Whitney, the highest peak in the lower 48 states. Or trek atop Mount Tallac, the majestic summit overlooking beautiful Lake Tahoe. Each of these adventures and dozens more beckon Sierra Nevada visitors of all ages. Hikers can summit each in a day, and sometimes in just a few hours, with a minimum of experience and gear. Author Matt Johanson shares his new book *Sierra Summits: A Guide to 50 Peak Experiences in California's Range of Light*.

Matt Johanson has enjoyed hiking, climbing, and skiing in the Sierra Nevada for his entire life, and posts his adventures and musings at sierrasplendor.com. *Sierra Summits* is his fifth book. Prior works include *Yosemite Adventures: 50 Spectacular Hikes, Climbs and Winter Treks* and *Yosemite Epics: Tales of Adventure from America's Greatest Playground*. Matt teaches and advises an award-winning student newspaper at Castro Valley High School. He lives in Castro Valley with his wife Karen.

OUTDOOR ED. COURSES

Wilderness First Aid

SAT, JAN 18, 8 AM-5 PM & SUN, JAN 19, 9 AM-5 PM
BAY CHAPTER OFFICE, 2530 SAN PABLO AVE., SUITE
1, BERKELEY

Two options are available: Take the two-day class for WFA certification (\$80 for members, \$100 for non-members); or the one-day class for Basic WFA certification (\$50, \$60, respectively). These are practical courses that prepare you to recognize and avoid wilderness hazards, and complete first aid outdoors with whatever equipment you have or can improvise. The two-day class adds many more hands-on skills and role-playing scenarios to help you put your skills together.

The textbook is by Steve Donelan, available on Amazon: *Wilderness Emergency Care, Third Edition Revised* (which has everything) or *Wilderness First Aid* (which just has what is taught in WFA). You can use the old edition of Steve's *WEC* book if you have it.

REGISTRATION

Current chapter outings leaders should call (510) 848-0800 or email fristaid@sfbaysc.org. Then mail a \$50 deposit check to the chapter office (it will be returned in class). The chapter pays for both days. All others should email Steve Donelan (donelan@sonic.net) and pay him in class (cash or check). Steve's website is www.wildernessemergencycare.com.

Snowcamping Training

Information on the Winter 2019 Snowcamping Training is printed on page 4 and is available online at www.snowcamping.org.

Beginner's Backpacking

APPLICATION DEADLINE: MARCH 8, 2020

INDOOR SEMINAR: MARCH 15, 2020

Learn how to travel safely and comfortably with only a pack on your back during the annual Beginner's Backpack course run by the Backpack Section. We are offering this opportunity for folks who have little or no experience in backpacking but who want to explore backcountry trails and get away from the crowds.

The course consists of:

- A full-day indoor session on Sunday, March 15, 2020; including a series of short lectures, discussions, slide and equipment show. The event will be hosted from 9:00-5:00 at the Kenwood Depot, 314 Warm Springs Road, Kenwood, CA 95452.
- One overnight backpack trip during a weekend (Saturday/Sunday) in April/May in small groups, led by experienced instructors. There are 4 dates to choose from. The location of

the backpack trips is in the greater San Francisco Bay Area. During the backpack trip you will have the opportunity to try out your gear; learn how to set up a tent and operate a backpack stove; practice basic navigation skills and, most important, experience what it feels to hike with a heavy pack on your back. Participation in the backpack trip requires attendance at the indoor session.

Participants you should be in good physical shape and have no serious health conditions. A good background in day hiking is necessary. Families with children age 12 and older are welcome. The course is not suited for younger children. Cost is \$90 per adult; \$45 for ages 12-22. Signup starts December 1, 2019. Early registration is recommended, as space is limited. Application deadline is March 8, 2020.

INFO & SIGNUP

You may find the event on the Sierra Club Event Calendar at <https://www.sierraclub.org/san-francisco-bay/activities>. Click on the link at the event to RSVP. You will receive further information and instructions. Contact Thomas Meissner for more details:

- Email: meissner.thomas@sbcglobal.net (Strongly preferred.)
- Phone: (707) 795-7980 (Please call only if you do not have access to email.)

.....



WHAT WILL YOUR
LEGACY BE?

Ensure your environmental legacy by naming the Sierra Club's San Francisco Bay Chapter in your will or trust.

If you have named your local Sierra Club chapter as a beneficiary or would like to discuss doing so, please contact us today:

MATT BIELBY
matt.bielby@sierraclub.org
510-848-0800 x 321

2019 CHAPTER ELECTION

Voting Instructions

All members who live in Alameda, Contra Costa, San Francisco, or Marin Counties, and who are registered as a member of record in the Club database, are eligible to vote. You may choose to vote by paper ballot or online. If we receive both electronic and paper ballots for the same membership number, only the electronic ballot will be counted. All ballots must be received before 2 PM on Friday, December 13th.

HOW DO I VOTE ONLINE?

The chapter will email a link to the online ballot to all members whose email addresses we have on file. If you do not receive this email but wish to vote electronically, go to the online voting site at <https://www.sierraclub.org/san-francisco-bay/2019-chapter-elections>. You will need to provide your membership number (the eight-digit number printed on the address label of this *Yodeler*, above your name). Full instructions for voting electronically are listed there.

HOW DO I SUBMIT MY PAPER BALLOT?

Your paper ballot is printed on page 33. Once you have made your selections, place the ballot in an envelope, stamp it, and mail it to: Ballot Submission, Sierra Club SF Bay Chapter, 2530 San Pablo Ave., Ste I, Berkeley, CA 94702. Ballots sent by fax or email will not be counted.

HOW DO YOU KNOW I'M A MEMBER?

The mailing label printed on the reverse of your ballot will indicate that it's valid. The mailing label includes your unique membership number. We cannot accept any ballot lacking a membership number.

WHAT AM I VOTING FOR?

Each Bay Chapter member can vote in the chapter-wide Executive Committee election and in the election for the Executive Committee of their local group (see below for finding group affiliation). The ballot indicates how many candidates you may vote for in each race. You may not select more candidates than indicated on the ballot, or your ballot will be considered spoiled and will not be counted. You may vote for fewer candidates than the maximum.

WHAT GROUP DO I BELONG TO?

To determine which group you belong to, look at the mailing label on this *Yodeler*. If you are a Bay Chapter member, a three-digit number beginning with "10" should appear in the line above your name, following your eight-digit membership number. This number designates your local group: **100** No group membership; **102** Marin; **103** Mount Diablo; **104** San Francisco; **105** Delta; **106** West

Contra Costa; **107** Southern Alameda County; **108** Northern Alameda County; **109** TriValley.

WHAT IF I HAVE A JOINT MEMBERSHIP?

Just after your group number, your mailing label also indicates whether your household has a single (SNGL) membership or a joint (JNT) membership. Each section of the ballot has two columns for votes. If you have a single membership, mark only in the first column. For joint memberships, each member makes their selections in one column. Both members in a joint membership must vote in the same medium (either paper or electronic ballot).

WHAT CAN "SPOIL" MY BALLOT?

Your ballot will be considered spoiled and not counted if:

- You vote in the incorrect group election (spoils group vote);
- You vote for more candidates than the maximum indicated;
- Your ballot is illegible; or
- You have already cast your ballot (your most recent ballot will be counted; for joint membership voting rules, see above).

WHAT IF I STILL HAVE QUESTIONS?

If you have any questions, contact the Chapter office at 510-848-0800 or email the Elections Committee at elections@sfbaysc.org.

HOW CAN I HELP?

We always need help counting the ballots. To volunteer to help at the ballot-counting party at 10 AM on Saturday, December 14th at the Chapter office in Berkeley, contact elections@sfbaysc.org, or just show up! Your participation helps ensure that the Sierra Club remains a truly democratic, grassroots organization.

Candidate Statements

Candidate names are listed alphabetically. The membership dates listed for each candidate are those listed in the Club membership database, but may not be completely accurate, especially for earlier time periods.

CHAPTER EXECUTIVE COMMITTEE

There are six candidates. You may vote for five or fewer.

CHANCE A. CUTRANO

RESIDENCE: Fairfax

OCCUPATION: Environmentalist

SIERRA CLUB MEMBER SINCE: 2016

ACTIVITIES: Treasurer, Marin Group; Member, Marin Group Executive Committee; Chair, Marin Group Political Committee; Co-Chair, Marin Group Climate Solutions; Vice-Chair from Marin, Bay Chapter Political Committee; Member, Bay Chapter Financial, Federal Lands, & Environmental Justice Committees; Member (2018–2019), National Climate Adaptation Task Force



STATEMENT: I've had the honor and privilege to work with some of the fiercest defenders of water, air, wildlife, and public health throughout the country. These are the passionate and thoughtful

unsung Sierra Club members and volunteers that give up-and-coming environmentalists and social justice advocates like myself the hope and guidance for creating the world we desperately need.

I've joined efforts to ban single-use plastics, allocate more transportation funds to electric vehicles, move municipalities to 100% solar and wind, endorse candidates that support our vision, and in 2018 I received Sierra Club California's Emerging Leader Award. It's been inspiring, but we have much more to do.

Change can happen locally, but we need to be courageous! We need to mobilize, we need to SHOW UP for our allies, and we need to cultivate a critical mass if we want to quickly mitigate the greatest risks of climate change and upend the systems of injustice that perpetuate the oppressive and extractive practices we bear witness to. I'm committed to ensuring urgency, collaboration, mutual respect, diversity, equity, and inclusion are woven into every fabric of the Club's work. I see myself not only as a beacon for youth activism and actionable solutions to our climate crisis but also as a conduit connecting community members to volunteer, leadership, and growth opportunities with the Sierra Club here in Marin and beyond.

I look forward to serving the Sierra Club membership and the planet in whatever capacity I am needed.

NORMAN LA FORCE

RESIDENCE: El Cerrito

OCCUPATION: Lawyer

SIERRA CLUB MEMBER SINCE: Life Member

ACTIVITIES: Chapter Chair (1991–1993 & 2009–2010); Chapter Executive Committee (1985–present); Chair (1984–present), East Bay Public Lands Committee (formerly East Shore State Park Task Force); Chapter Political Committee (1991–present); Chair, Chapter Legal Advisory (1984–present); Chair (2004–2014), West County Group



STATEMENT: You know me as the Chapter leader on parks and open space for the past 35+ years. I led the effort to create the McLaughlin East Shore State Park and saving the shoreline for parks and open space. I received the East Bay Regional Park District's award for Citizen Advocacy in working to make Crab Cove in Alameda part of the Crown Beach State Park, and fighting to save Point Molate. In 2010, the Chapter honored me for my service to the Chapter and Sierra Club. In 2004, the Sierra Club awarded me its William Penn Mott Award for making a significant contribution to our State Park system. In 2015, Citizens for East Shore Parks awarded me its Sylvia McLaughlin award for Environmental Stewardship and for my work in creating the McLaughlin East Shore State Park.

In West Contra Costa County I have led work to preserve the West County Shoreline, to save Point Molate as a park, to stop Chevron from refining the heavy tar sands for oil, to keep heavy tar sands oil from being refined in West County and shipped out of West County, and to stop dirty coal from being handled in the Bay Area causing pollution and contamination to our neighborhoods.

I have also been a major donor to the Chapter and have led successful fundraising campaigns for the Chapter. I have also represented the Sierra Club pro bono in lawsuits as its lawyer.

I will continue our strong advocacy on issues that matter to Sierra Club both locally, statewide, nationally, and internationally. We must save Tesla Valley from Off-Road Vehicles, get more parkland in the East Bay, preserve West Marin from attempts to develop

it, and stop heavy oil from being shipped through our ports as part of our bigger effort to *reverse* climate change.

MAX PERREY

RESIDENCE: Mill Valley

OCCUPATION: Nonprofit Leader

SIERRA CLUB MEMBER SINCE: 2009

STATEMENT: *No statement submitted.*



GABRIEL QUINTO

RESIDENCE: El Cerrito

OCCUPATION: El Cerrito Councilmember

SIERRA CLUB MEMBER SINCE: 2013

ACTIVITIES: Incumbent, SF Bay Chapter Executive Committee; Former Chair & Member, West Contra Costa Group Political Committee; Elected Delegate (2013–present), California Democratic Party; Vice President, League of Women Voters West Contra Costa County



STATEMENT: I'm an El Cerrito Councilmember and former Mayor in El Cerrito, serving on local, county and regional boards and commissions. As Councilmember I serve as VP for the Contra Costa Mayors Conference, and member of the County Hazardous Materials Commission. For the League of California Cities, I am President of the API Caucus, Board member of the LGBT Caucus, East Bay Division, and Environmental Committee member.

I am honored to have been one of the Councilmembers to vote in favor of El Cerrito's joining MCE, and have supported CCA from the beginning. I strongly support the ongoing development and implementation of all alternative energy sources and of alternate and efficient modes of transportation. I support restoration of the Delta waterways, and a ban on fracking on Federal and State lands. I support Transit Oriented Development near our BART Stations and along San Pablo Avenue. I have actively worked with the League of Conservation Voters and my hometown of El Cerrito in their efforts to end the use of plastic bags and styrofoam.

I actively support education on environmental issues. As a former Board member for the El Cerrito Democratic Club, I invited environmentalists such as EBMUD President Andy Katz speak on clean water issues and California environmental bills such as SB375 and AB32. Through the League of California Cities Environmental Committee I have supported every environmental bill that has been signed by the Governor.

JOHN RIZZO

RESIDENCE: San Francisco

SIERRA CLUB MEMBER SINCE: 1982

STATEMENT: *No statement submitted.*



IGOR A. TREGUB

RESIDENCE: Berkeley

OCCUPATION: Safety Engineer; Berkeley Commissioner

SIERRA CLUB MEMBER SINCE: 2008

ACTIVITIES: Chair, SF Bay Chapter; Conservation Chair, Northern Alameda County Group; Chapter Transportation Committee, Environmental Justice Team, California Energy Committee; National Building Electrification Campaign Design Team; Immediate Past Chair, Berkeley Housing Advisory Commission &



Berkeley Zoning Adjustments Board; Chair, Berkeley Peace & Justice Commission; Commissioner, Berkeley Rent Board & AC Transit Parcel Tax Oversight Committee; Co-Chair, California Democratic Party Executive Board/Resolutions; Indivisible Berkeley Science & Environment Team

STATEMENT: Preserving the environment and ensuring that policy decisions are made with an equity lens and ample input from impacted communities have always been at the forefront of my work as a legislator and climate activist.

As an elected Berkeley commissioner, I crafted some of the strongest affordable housing policies and financing tools in the nation; helped pass the nation's first natural gas ban in new buildings; and enhanced access to energy upgrades and solar financing for homeowners. I expanded a blue-green alliance around issues like protecting our air, water, and open space, integrating clean energy solutions with good jobs, and saying *No!* to coal traveling through our communities.

As your Chapter Chair, I used my experiences as an immigrant to recruit, retain, and expand the Chapter's membership and leadership base. Amid trying times nationally, we welcomed an unprecedented growth in new members and enhanced the financial sustainability of our chapter. I've worked tirelessly to ensure that the Chapter is here for you – whether your passion is our conservation issues, expanding our climate campaigns, or joining our fantastic outings programs.

I humbly ask for your vote, so I keep serving you as we RESIST, PERSIST, and PROTECT our planet. Together we will remain a potent and effective voice for the environment and strengthen partnerships within and outside of the Club. Please contact me at igor@sfbaysc.org with your questions and ideas. Thanks for your consideration!

MARIN GROUP CANDIDATES

There are five candidates. You may vote for five or fewer.

CHANCE A. CUTRANO

RESIDENCE: Fairfax

OCCUPATION: Environmentalist

SIERRA CLUB MEMBER SINCE: 2016

ACTIVITIES: Treasurer, Marin Group; Member, Marin Group Executive Committee; Chair, Marin Group Political Committee; Co-Chair, Marin Group Climate Solutions; Vice-Chair from Marin, Bay Chapter Political Committee; Member, Bay Chapter Financial, Federal Lands, & Environmental Justice Committees; Member (2018–2019), National Climate Adaptation Task Force

STATEMENT: *See Chapter Executive Committee statement.*



LOUIS NUYENS

RESIDENCE: Forest Knolls

OCCUPATION: Consultant

SIERRA CLUB LIFE MEMBER SINCE: 2002

ACTIVITIES: Member (2004–present), Sierra Club Marin Group; Chair (2011–present), Sierra Club Marin Group; Founding President & Executive Director (2001–present), Watershed Preservation Network; Board Member (1997–99), Environmental Forum of Marin; Co-Director (1994–99), Black Point Forest Rescue Project



STATEMENT: I have been an active environmentalist and advocate for most of my life; I believe in the goals and mission of the Sierra Club. I am keenly interested in development of ongoing, pro-active programs to keep Sierra Club preservation activities vital, and in facilitating increased involvement by members.

My primary areas of interest are:

- Fundamental limitations on growth, alternative economic and societal models;
- Evidence supporting scenarios of abrupt climate change, and what might still be done;
- Impacts of overpopulation; estimates of global carrying capacity;
- The importance of 'piecewise sustainability';
- 'Relocalization' as alternative land-use and economic designs;
- Preserve valuable ecological habitat, open space, and agricultural lands;
- Prevent sprawl and over-development;
- Strengthen local environmental regulations and enforcement of existing regulations;
- Evolution beyond transit-oriented development toward 'relocalization' models in planning and redevelopment; and
- Educate Club leaders, and the general public, and encourage national and global Club leadership in those areas.

My environmental experience includes: founder and Executive Director of Watershed Preservation Network; data analysis to help clean up and shut down dirty coal plants; volunteering technical support and campaign consultation to environmentally progressive campaigns and candidates; environmental education program development; researching and commenting on local and statewide legislation, regulations, enforcement, and public process; drafting successful statewide legislation; creating public forums and debates; a five-year campaign to preserve old-growth oak woodlands and seasonal wetlands in Black Point, Novato; serving on the Environmental Forum of Marin board; creating a graphical research presentation on pollutant sources into the Russian River watershed; many others.

I look forward with enthusiasm to continuing being involved in Sierra Club activities and leadership.

JINESSE REYNOLDS

RESIDENCE: San Anselmo

OCCUPATION: Outdoor Industry Apparel Designer, Semi-Retired

SIERRA CLUB MEMBER SINCE: 2019

ACTIVITIES: Co-Chair, San Anselmo Sustainability Commission; SC Sub Committee "Plastic Free Marin"; Lifelong Outdoors Enthusiast of Water & Mountain Activities



STATEMENT: After moving back to Marin County six years ago, I changed focus from my full-time career in the outdoor industry to spending more time on critical environmental issues. I volunteered for beach clean-ups, climate marches, and joined the Sustainability Commission in San Anselmo and Plastic Free Marin.

In November 2018, the San Anselmo Town Council adopted the Single-Use Foodware Reduction Ordinance that I led and co-authored, one of the most robust in California. Through this experience I met a network of change-makers and was exposed to all layers of stakeholders, NGOs and governmental officials. It kickstarted me into wanting to do more, believing that one person can truly make a difference.

I am inspired to join the Marin Group Executive Committee because I believe we are running out of time to make the necessary changes to mitigate the Climate Crisis. We need all hands on deck to expedite local and global environmental policy and initiatives. I am committed to this effort and, if elected, ready to jump in and move forward.

JUDITH ROGERS

RESIDENCE: San Rafael

OCCUPATION: Public School Teacher, Retired

SIERRA CLUB MEMBER SINCE: 2019



STATEMENT: The current Sierra Club Marin Group's Executive Committee is an experienced team of dedicated leaders, clearly passionate about their work. I am eager to actively support their mission to promptly promote better policies.

Sierra Club endorsements have always been my guide for local, state, and national elections. Having recently joined the Sierra Club, I am looking forward to participating in discussion of legislative positions by candidates to identify those deserving Sierra Club endorsement.

Marin County faces the challenge to accommodate a growing population. Wildlife habitats, watershed, and quality of life are threatened by constant pressure for development. I support community guided smart growth for affordable housing near transportation corridors which encourages walking, bicycling, and public transportation.

My skills as an effective teacher in public education will be equally valuable in working with Sierra Club. Fundamental qualities such as accountability, organization, flexibility, and willingness to collaborate guided my success in the classroom. Those essential traits will inform my participation with Sierra Club committee work. Research, writing, and editing are skills I enjoyed throughout my forty-year teaching career. The opportunity to research, write, and edit for the Sierra Club would be invigorating. Outside of the classroom, educators serve on a variety of committees, attend meetings, communicate with the public, produce and present reports and lead discussions. I have forty years of experience in those areas. In addition, I have the time and desire to fully commit to the responsibilities of the Marin Group Executive Committee. It would be an honor to contribute to the important work of this distinguished group.

JUDY SCHRIEBMAN

RESIDENCE: San Rafael

OCCUPATION: Activist & Writer

SIERRA CLUB MEMBER SINCE: 1993

ACTIVITIES: Board Director, Las Gallinas Valley Sanitary District; Board Member, Gallinas Watershed Council & Watershed Alliance of Marin; North Bay Watershed Association; Bioneers Attendee; GWC Community Partner with Marin School of Environmental Leadership at Terra Linda High School & Lucas Valley Elementary on their Outdoor Classroom Restoration of Miller Creek; Certified Classical Homeopath



STATEMENT: I like to garden, hike, read sci-fi and fantasy, keep chickens, and am experimenting with Hugelkultur. I've been active environmentally and politically since grade school. I am currently serving as Chair of the Marin Group this year, after being elected to the ExCom in 2017 as a petition candidate. As

chair of our Conservation Committee as well, I have been working diligently to inform and include our members regarding the many environmental issues we are facing locally and globally. My administration and organizational skills include producing agendas; leading meetings; updating the website; and organizing and making accessible our official letters, minutes and position papers. Our group works collaboratively with numerous Marin environmental organizations thanks to the long-term relationships we all have forged.

With so many assaults on our planet, it is imperative we work quickly, efficiently, collaboratively and intelligently to protect ourselves from the worst effects of our reliance on fossil fuels by implementing the practices of the Green New Deal and Drawdown here in Marin. Our environmental heroes and sheroes of the past protected Marin's ridges, the marshes and the Bay, with their diversity of species and natural beauty. They will not remain if we are not vigilant in their continued protection. This is our Marin Group's imperative and mine. I hope to earn your vote by continuing to help grow and strengthen the Marin Group Sierra Club.

MT. DIABLO GROUP CANDIDATES

There are two candidates. You may vote for up to two.

JONATHAN BASH

RESIDENCE: Martinez

OCCUPATION: Nonprofit Communications Consultant

SIERRA CLUB MEMBER SINCE: 2016

ACTIVITIES: Member, Mt. Diablo Group Executive Committee & SF Bay Chapter Political Committee; Member, Contra Costa County Hazardous Materials Commission; Chair, City of Martinez Civil Service Commission; Board Member, Martinez Parks Bond Oversight Committee; Presiden, Contra Costa Young Democrats



STATEMENT: As a Martinez resident, I often walk past beautiful Mt. Wanda and the historic home of John Muir, founder of the Sierra Club. This near-daily ritual reminds me of all the amazing natural resources located right here in our backyard.

Our environment is precious, as is our quality of life. And both are at risk if we don't stand united.

Sprawl with no long-term strategy has worsened our commutes, harmed our environment and has barely put a dent in the housing crisis. Climate change threatens our very own existence. And all the while, our movement has taken a backseat to a multitude of short-term threats.

This coming year, I hope to continue driving the regional conversation back to urgent conservation and climate issues by serving on the Mount Diablo Group and Political Committee. I also intend to further strengthen our group by partnering with likeminded organizations to amplify our ability to make change.

Throughout my entire career, I have managed tough environmental and public health campaigns that improve the health of all Californians. Working in local government and nonprofits, I have advocated for tangible community change.

If reelected, I will continue to bring this experience—and significant expertise in media relations and policy advocacy—to the table. Hopefully, I can once again earn your support. If you have any questions, please email me anytime at jonathan.t.bash@gmail.com.

RICHARD COHEN

RESIDENCE: Lafayette

OCCUPATION: Finance

SIERRA CLUB MEMBER SINCE: 2007

STATEMENT: *No candidate photo or statement submitted.*

NORTHERN ALAMEDA COUNTY GROUP CANDIDATES

There are nine candidates. You may vote for up to five.

LUCY CLAIRE CURRAN

RESIDENCE: Berkeley

OCCUPATION: Vocational & Effectiveness Coach

SIERRA CLUB MEMBER SINCE: 2019

ACTIVITIES: Volunteer, Citizens Climate Lobby



STATEMENT: Lucy Claire Curran joined the Northern Alameda County Group of the Sierra Club this past July and is a resident of Berkeley. She is running for an ExCom position with the Northern Alameda County Group of the Sierra Club because she loves wild places and the planet and wants to do more to protect them. Curran has been a volunteer with Citizens Climate Lobby since the fall of 2017 and has increasingly sought opportunities to build connection and foster ‘cross pollination’ between various environmental groups. The Sierra Club, with its long history, wide reach, and established reputation as a leader in environmental action, will continue to play an important role in the collective response to climate change in California and nationwide. Curran believes that California—and in particular the Bay Area—is uniquely suited to lead the U.S. in putting environmental ideals into action, and she hopes to step up to do her part.

SOPHIE HAHN

RESIDENCE: Berkeley

OCCUPATION: Berkeley City Councilmember

SIERRA CLUB MEMBER SINCE: 1992

ACTIVITIES: Berkeley City Councilmember, District 5; Chair, Sierra Club Northern Alameda County Group; Member, Northern Alameda County Conservation Committee; Trustee, Berkeley Board of Library Trustees; Alternate, Alameda County Stop Waste Board; Author, Berkeley Single Use Disposable Ordinance; Founder, Berkeley Edible Gardens Initiative & Berkeley Basket Urban CSA; Past Co-Chair, 15th CA Assembly District Environmental Task Force; Member, Berkeley Zoning Adjustments Board; Co-Convener, Berkeley Deep Green Building; Chair, Berkeley Commission on the Status of Women; Board, Planned Parenthood Shasta-Diablo; President, King Middle School PTA



STATEMENT: It is my honor to serve as Chair of the Sierra Club Northern Alameda County Group (SC NAC) Executive Committee, and to work with an organization—and community—so deeply committed to action on behalf of the environment, and social justice.

The Sierra Club plays a critical role in securing a sustainable future across the United States, and the globe. But no great progress is ever made without local action, and it is imperative that environmentally conscious regions like Northern Alameda County continue to lead the way.

I authored Berkeley’s recent Single Use Disposables ordinance,

transitioning Berkeley from throw-away to reusable foodware, and am dedicated to using my local voice to inspire change more widely. I am a champion for Clean Energy, Sustainable Buildings, Affordable Transit Oriented Housing, Urban Agriculture, Green Schoolyards, Zero Waste, Tree Planting, and more.

My focus as Chair of the SC NACG has been to build capacity on every front: build diversity and participation; build partnerships with activists and organizations; and build initiatives with maximum relevance and impact. With deep experience in policy, advocacy, legislation, organizing, law, governance and fundraising, I respectfully ask for your vote, and look forward to continuing to serve you.

MELINDA HOWARD-HERRARTE

RESIDENCE: Berkeley

OCCUPATION: Project Manager

SIERRA CLUB MEMBER SINCE: 2019

ACTIVITIES: Director (2015–present), President (2017–present) & Northern California Division Vice President (2018–present), United Nations Association East Bay Chapter; Oakland/San Francisco Co-Site Lead (2018–present), Blue Goes Green; Volunteer, 9th Annual David Brower Dinner



STATEMENT: I am new to Sierra Club but am no stranger to non-profits and environmental causes. My second term of Presidency with UNA, East Bay Chapter will end in January 2020, allowing me additional time to devote myself to the urgent and critical fight against the climate crisis. I admire Sierra Club’s long history, extensive membership base, and solid track record of environmental action, and I look forward to the opportunity to serve.

XAVIER JOHNSON

RESIDENCE: Berkeley

OCCUPATION: Legal Fellow, Centro Legal de la Raza

SIERRA CLUB MEMBER SINCE: 2017

ACTIVITIES: Former Congressional Aide to Congresswoman Barbara Lee; Legal Intern, Tenants Together; J.D. (2016), University of California, Berkeley



STATEMENT: I would like to continue to bring a fresh perspective to the Sierra Club. I have been involved in the Sierra Club as an Executive Committee member for 2 years now and I have focused on building coalitions with labor, communities of color, LGBTQI+ groups, and younger generations. In particular, I bring a focus on the intersection of Housing Policy, Environmental, and Social Justice issues. I have worked to keep low income tenants and homeowners housed in the East Bay which serves to keep our greenhouse gas emissions lower.

I have been working in Coalition with different communities like South Berkeley, East Oakland, West Oakland, and communities in the Fruitvale areas to address the unique environmental challenges these communities face. Whether it be air pollution from traffic, leaded paint, illegal dumping, or a general lack of access to public parks and recreation, I have been focused on ensuring the Sierra Club’s agenda is prioritizing the needs and goals of the most impacted communities in our area.

The more people we bring to the conversation and empower, the stronger our movement will be. This is why it is so important to work intersectionally to make sure that no one faces discrimi-

nation on the basis of race, sex, sexual orientation, gender identity, citizenship status or any other characteristics. We have actively been seeking to add women and people of color to the Board and I have brought an additional candidate who I hope to encourage to take a leadership role in the near future. My hope is that the Board is more diverse when I leave than it was when I joined it. The Sierra Club should build on its current partnerships and develop new ones so that everyone can live healthy lives.

ANDY KATZ

RESIDENCE: Berkeley

OCCUPATION: Environment & Workers' Rights Attorney

SIERRA CLUB MEMBER SINCE: 2002

ACTIVITIES: Member (2005–2019), Northern Alameda County Group Executive Committee; Chair (2011–2012) & Legislative Committee Member, Sierra Club California; Former Chair, Bay Chapter Transportation Committee; Sierra Club Delegate (2009–2019), UN Climate Negotiations; Director, East Bay Municipal Utility District



STATEMENT: I joined the Sierra Club after working on the San Francisco Bay Chapter's successful campaign to establish an urban limit line for Alameda County in the November 2000 election. The challenges of protecting our climate and natural resources will continue to persist. Sierra Club must maintain its strong environmental advocacy and build our grassroots so members can be a part of the process.

My areas of conservation expertise include air quality and climate change, renewable energy, transportation, land use and affordable housing, and water. Professionally, I work as an environmental and workers' rights attorney, and am trained as a transportation and environmental planner. As a board member of the East Bay Municipal Utility District, I fought hard to defeat the proposal to expand Pardee Reservoir because of the impacts flooding miles of the Mokelumne River, now protected as a California wild and scenic river, and worked to double investment in water conservation programs and ensure drought resilience.

In my role on the California Legislative Committee, I have worked closely with our activists and staff to ensure our legislative advocacy program remains strong by defending CEQA and advancing California's clean energy and climate laws. Our membership needs to grow to reflect the diversity of California, and more members need to get actively involved with our mission. I am running for re-election to the Northern Alameda County Executive Committee to contribute my experience in environmental policy and community organizing in continuing service for our environmental movement. I welcome your feedback - write me with your ideas and questions at andy@andykatz.com.

PATRICIA LAMBORN

RESIDENCE: Alameda

OCCUPATION: Community & Labor Organizer, Retired

SIERRA CLUB MEMBER SINCE: 2016

ACTIVITIES: Member, Sierra Club East Bay Public Lands Committee; Endangered Species Monitor, Golden Gate Audubon Society; Monitor, Alameda Point Harbor Seals; Member, Baykeeper; Brand Audit, CASA Coastal Cleanup; Canvasser, All Rise Alameda; Volunteer, Save the Bay



STATEMENT: After traveling non-stop in service to our union members, I took a deep breath and engaged in my own community, Alameda and the Bay Area. I have cared deeply about the environment all my life, organizing to found the Silicon Valley Toxics Coalition when I lived in San Jose in the 1980s. In Coalition with the Sierra Club, Baykeeper, GGAS, CASA and residents of Alameda, I've:

- Stopped an illegal hotel development upon a parcel of land on the San Francisco Bay;
- Stopped the development of the Nautilus Data Center on Alameda Point, which proposed to utilize thousands of gallons of bay water to cool the computer servers and then dump it back in the bay; and
- Assisted the passage of the Compostable Foodware and Straws on Request ordinance in Alameda.

The Sierra Club is an incredibly powerful force in resisting the destruction of all we have fought for by the Trump Administration. I am honored to be nominated to serve on the Northern Alameda County Group Executive Committee. I believe my skills and experience will be of value.

SUZANNE MERKELSON

RESIDENCE: Berkeley

OCCUPATION: Energy Policy Analyst

SIERRA CLUB MEMBER SINCE: 2015

ACTIVITIES: Member, Sierra Club Tree Team



STATEMENT: I'm a committed and lifelong environmentalist with specific expertise in public policy, advocacy, communications, and clean energy. My career has been focused on clean energy advocacy, including working at SolarCity and Tesla on solar, distributed energy, and EV policy and advocacy, and most recently, with the City of San Francisco, as a policy analyst focusing on CleanPowerSF (San Francisco's Community Choice Aggregation program) and the San Francisco Public Utilities Commission's Power Enterprise more broadly. My volunteer activities have included fundraising for clean energy solutions via Climate Ride California and social media strategy benefiting Democratic political races as a Swing Left social media strategist. I also recently completed a 6-month fellowship with the Clean Energy Leadership Institute, a selective 21-week training program for young professionals who exhibit strong leadership potential and are committed to advancing the clean energy and transportation economy.

These experiences and my specific expertise in policy analysis, advocacy, and communications can help Northern Alameda County better understand the implications of environmental, energy, transportation, and land-use policies and strategize the best ways to advocate for them. Beyond policy and advocacy, my experience in communications encompasses everything from writing press releases and op-ed to creating comprehensive social media campaigns, skills I believe will be important in my work with the Sierra Club.

I believe the Sierra Club is an important leader at the local, state, and national levels and I think my expertise can help the Sierra Club continue this local leadership in Northern Alameda County as our need to address climate change becomes ever more vital. I am deeply committed to ensuring that the economic transition needed to solve climate change is just and equitable, empowering communities that have been and continue to be harmed by fossil fuels.

NANCY RADER

RESIDENCE: Berkeley
OCCUPATION: Executive Director, California
Wind Energy Association
SIERRA CLUB MEMBER SINCE: 1993
ACTIVITIES: Member, Chapter Picnic



STATEMENT: I have been a Sierra Club member and supporter of the local chapter for over 30 years. I regularly hike Bay Area trails and raft rivers and backpack in Utah. In my professional life, I have been a renewable energy advocate for over 30 years, practicing before all of California's energy agencies. I have some extra time, and would like to apply my experience to the NAC Group.

I believe that aggressively reducing greenhouse gas emissions should be the primary focus of the Club, given that the IPCC has warned that emissions must decline 45% from 2010 levels by 2030 to hold global temperature rise to 1.5 degrees. Bold action is necessary to avoid catastrophic impacts to the environment as we know it, with the worst impacts falling on the world's most vulnerable people.

California is—on paper—on track to achieve these reductions; however, much work remains to be done and hard decisions must be made. Berkeley's ban on new natural gas hook-ups is a great example of the kind of actions that must be taken to shift us off of fossil fuels. At the same time, the most serious environmental and economic injustices faced by disadvantaged communities must be addressed as we shift to a clean-energy economy. As clean electricity becomes our main fuel source, it must also remain affordable for low-income consumers, and the homes of the vulnerable must be protected from increasing heat.

With my familiarity with state clean energy policies and processes, I can help the NAC sort through the issues to effectively advocate measures at the state and local levels that will be necessary for California to achieve these goals.

ALEX SHARENKO

RESIDENCE: Berkeley
OCCUPATION: Solar Energy Scientist
SIERRA CLUB MEMBER SINCE: 2017
ACTIVITIES: Berkeley Zero Waste Commission,
Labor Commission, & Housing Advisory Commission



STATEMENT: I am running for the Sierra Club NAC Executive Committee because I think this new era demands new leadership.

Professionally, I have spent my career dedicated to fighting climate change using technology—I hold a PhD in materials science and work to research, engineer, and design next-generation solar energy technologies. But after painfully watching the 2016 election, I knew that working on technology alone wasn't enough; action is needed to organize and advocate for a clean, sustainable future. Since then, I have gotten involved in policy: joining Berkeley's Zero Waste Commission to eliminate waste and protect our creeks and the Bay, as well as the Housing Advisory Commission to advocate for affordable housing and to address the rising inequities—and associated environmental injustices—we see in our community.

I believe the Sierra Club Executive Committee must similarly work to address these problems, but I have seen firsthand how leaders have not sufficiently addressed our intertwined housing, transportation and climate challenges. They have failed to support

infill housing projects on top of urban BART stations that would have generated over \$10 million for low-income affordable housing, while simultaneously reducing emissions from transportation and providing good-paying union jobs.

We need Executive Committee members that will support these types of bold, progressive solutions. I believe we can, and must, do better. As a member of the Executive Committee, I will champion green, affordable, and sustainable homes close to transit and good jobs to combat suburban sprawl, improved transit and biking infrastructure to reduce carbon emissions, and equity focused programs to keep the Bay Area green and enjoyable for everyone.

SAN FRANCISCO GROUP CANDIDATES

There are five candidates. You may vote for up to five.

HUNTER CUTTING

RESIDENCE: San Francisco
OCCUPATION: Professional Advocate,
Climate Protection



SIERRA CLUB MEMBER SINCE: 2015
ACTIVITIES: Member (2016–present), SF Group
Conservation Committee; Member (2018–2019), CNRCC Sea
Level Rise Task Force; Member (2018), Bay Chapter Elections
Committee; Founder & Volunteer Leader, Save Clipper Cove;
Member, 350.org; Member, California Native Plant Society;
Member, California Waterfowl Association; Member, Harvey
Milk Democratic Club

STATEMENT: I was raised in the Bay Area, and grew up hiking and sailing in northern California and the Sierras. My mom had me licking envelopes back in the day for Ron Dellums, and I have good memories of skiing off the Club's tow ropes at Caire Tappan (and doing chores!). Experiencing and learning about natural landscapes is a personal passion of mine. And climate protection is the focus of my professional work. I wish to bring all of this to the Club.

Back in the late 90s, I worked with many others in the Club to defeat an anti-immigrant measure on the Club's national ballot. In 2015 I started and led Save Clipper Cove, an organization dedicated to fighting real estate developers pushing to take Clipper Cove at Treasure Island for a private luxury marina (we won).

I see climate change as the most important issue facing the Club. And I see urban development as the most important issue facing the San Francisco Group in particular. The recent movement to promote ride hailing and deregulate urban development threatens to undermine the integrity of San Francisco, degrade the urban environment, erode the stock of affordable housing, and further accelerate the displacement of marginalized communities. I will work to help champion a vision of urban development that promotes affordable housing and stands in solidarity with the progressive struggles of all communities.

ARTHUR FEINSTEIN

RESIDENCE: San Francisco

OCCUPATION: Conservationist

SIERRA CLUB MEMBER SINCE: 1981

ACTIVITIES: Member (2006–present), Chapter & SF Group Executive Committee; Chair (2010–2013), Executive Committee; Interim Chapter Director (2012); Chair (2018), SF Group Political Committee; Chair (2009–2012), SF Group Conservation Committee; Chair (2017–present), Sierra Club California Conservation Committee; Member (2016–present), Sierra Club California Executive Committee; Recipient (2014), National Sierra Club’s Susan Miller Award; Recipient, Clean Water Network’s 30-Year Heroes Award; Recipient, National Audubon Society’s Bay Champion Award



STATEMENT: San Francisco and the Bay Area needs a strong Sierra Club as never before. Climate change, sea level rise, extreme weather, drought, species extinction, fracking: the list goes on and can seem overwhelming. The answer is not despair; rather, to accept the challenge, seek solutions, and implement them. To do this will require a strong Sierra Club that will lead the effort to reduce and then eliminate dependence upon non-renewable fuels. That will advocate for answers to sea level rise, such as creating new wetlands to reduce storm surges and act as levees. That will work to preserve our natural world, in the face of increased development.

As Chapter chair, I helped establish an energetic and successful Energy Committee. I have worked on wetland issues on local, state and federal levels, helping save and restore thousands of acres of wetlands around the Bay. I played a key role in saving two square miles of East Bay habitat in our 14-year struggle to save Gateway Valley in Orinda. With many others, I helped establish the McLaughlin Eastshore State Park.

The Club makes a difference. The Bay Area is a healthier place for us and for the critters with whom we share this world, thanks to our efforts. I believe I have the skills and experience to help the Club continue this essential work.

BARRY HERMANSON

RESIDENCE: San Francisco

OCCUPATION: Organizer, Single Payer Now & Green Party

SIERRA CLUB MEMBER SINCE: 1998

ACTIVITIES: Member (2016–present), Sierra Club San Francisco Group Executive Committee; Representative (2018–present), SF Bay Chapter Executive Committee & SF Group; Chair (Mar 2019–present), SF Group Conservation Committee; Member (2009–present), San Francisco Green Party County Council; Co-Chair (2009–2012), California Green Party Coordinating Committee; Green Party Candidate (2002–present); Small Business Owner (1980–2005); Proponent & Donor, SF Minimum Wage Ballot Measure; Co-Chair, SF Living Wage Coalition



STATEMENT: It has been my pleasure to serve alongside strong advocates for the environment on the SF Executive Committee for nearly four years. I believe climate change requires a much more rapid response than proposed by our political “leaders”. California and a few other states and communities have pledged to be carbon neutral by 2045. Greens believe 2030 should be the target. Every year we delay will bring greater changes to our climate. I encour-

age you to put the third Tuesday evening of the month on your calendar. The SF Group Conservation Committee meets from 6 to 8 p.m. The Executive Committee meets after a brief break. Listening to presentations and participating in discussions about local and regional environmental issues is just one way of becoming more involved in the Sierra Club. Since I became a member more than 20 years ago, I’ve enjoyed many hikes, picnics and dinners. During the last four years I’ve also attended public hearings and participated in outreach to new members while tabling at events.

I look forward to the possibility of continuing this work. I ask for your vote.

JOHN RIZZO

RESIDENCE: San Francisco

SIERRA CLUB MEMBER SINCE: 1982

STATEMENT: *No statement submitted.***HOWARD STRASSNER**

RESIDENCE: San Francisco

OCCUPATION: Mechanical Engineer, Retired

SIERRA CLUB MEMBER SINCE: 1961



STATEMENT: The Sierra Club started over a hundred ago to preserve wilderness in our country when most people were not concerned, because most people saw that there was still a lot of wilderness. Almost forty years ago in San Francisco the SF Group took their first steps to support reducing the supply of parking when most people, even Sierra Club members, were convinced that there was a shortage of parking. During the many years that I have been a member of the Executive Committee, we supported San Francisco’s innovative steps and urged for bigger steps to reduce parking as a means to reduce driving. We know that this is important because of driving’s large contribution to the climate crisis.

Unfortunately, in a few years all of this good work, to reduce driving and help Muni work better while reducing the emission of climate change gases will be overtaken by uber, lyft and the robotic taxis to follow. We are already seeing increased congestion downtown and reduced revenues for Muni from parking. Soon, almost no one will need a parking place and Muni will lose necessary revenue.

But, we have another problem, the production of affordable housing. I along with your Group Excom have always supported the ballot measures and ordinances which tend to maintain and expand the supply of affordable housing. But, it has become clear to me that we should also support additional market rate housing, near good transit, even if that means accepting greater height and density, in order to provide more affordable housing. This policy is similar to SC National policies on housing and driving, which seek to have more people live in places where they don’t have to commute long distances and don’t have to use a car for most of their everyday needs.

I am asking for your support again, for election to the SF Group ExCom so that I can continue have a part with the Sierra Club in our City’s efforts to solve these problems.

SOUTHERN ALAMEDA COUNTY GROUP CANDIDATES

There are three candidates. You may vote for up to two.

JEWELL (HARGLEROAD) SPALDING

RESIDENCE: Fairview (Unincorporated)

OCCUPATION: Lawyer

SIERRA CLUB MEMBER SINCE: 1995

ACTIVITIES: Present Chair, Southern Alameda County Group; Chapter & Political Executive Committees; Chapter Strategic Planning Subcommittee; East Bay Public Lands; Former Member, EBRPD Trails Council; Citizens Against Pollution; Hayward Area Planning Association; Citizens for Alternative Transportation Systems (CAP); Former Chair, Environmental Section, Alameda County Bar Association



STATEMENT: Presently facing our communities are the consequences of climate change and its impact, hurting some more so than others, depending upon where we live. One function of local groups is to consider which local candidates and legislative positions to endorse. Because Southern Alameda County has serious environmental challenges, including being “too polluted” as recognized by the Regional Air Board, it makes our choices and decisions all the more important. My goal is that we endorse not just those who “talk the talk,” but “walk the walk,” to mitigate climate change.

As an attorney and former president of my homeowners association in unincorporated Fairview, the Hayward/Castro Valley area, I worked to address the necessary traffic mitigations for two large housing developments. Throughout the years I have commented on substantial and numerous Environmental Impact Reports (EIRs) and participated and litigated land use referendums and initiatives, including litigating environmental issues under CEQA, the Endangered Species Act, the Clean Air Act and Coastal Zone Management Act.

Some of the issues facing SAC that I seek to address are protection of the riparian corridors, including those running through the former 238 Highway project, the integrity of the hills and agriculture land, and the future of the proposed Dumbarton Transportation Corridor and Niles Canyon.

If elected, I will continue to work to ensure that SAC is effective in achieving the Sierra Club’s environmental goals and mission.

TONI PRYOR WISE

RESIDENCE: Fremont

OCCUPATION: Real Property Lawyer, Retired

SIERRA CLUB MEMBER SINCE: 1988

ACTIVITIES: Member & Treasurer (2014–present), Southern Alameda County Group Executive Committee; Member (2015–present) & Vice Chair (2017–present), Chapter Political Committee; Alternate (2016–present), Chapter Executive Committee; Anderson Valley Land Trust; Fellow, American College of Real Estate Lawyers; Fellow, American Bar Foundation



STATEMENT: Now retired from law practice, I volunteer with organizations like Sierra Club, with which I share passionate interests. As a former biologist, I have strong concerns about climate change and biodiversity; as a real estate lawyer, I am interested in appropriate land development and use of natural resources. These

interests inform my environmental concerns: climate change, energy, transportation, and water resources; as well as legal and social issues involving land development, housing, and social justice.

In the current political climate, grassroots organization has critical importance. As a local Sierra Club leader, I can increase and focus environmental action in Alameda County and spotlight local concerns. Current projects in which I am involved include the Dumbarton Transportation Corridor, a Union City surplus land sale (Quarry Lakes Park and Ramirez farm), Ruby Street low income housing proposal (Castro Valley), Coyote Hills Park expansion (Fremont) and ongoing work to protect Niles Canyon. Also, I participate in the review and possible endorsement by Sierra Club of political candidates and legislation.

Having served other non-profit and community organizations in leadership positions, I am a seasoned and effective advocate and team member, and appreciate how to work productively with others.

If elected, I will continue to devote my knowledge, skills and resources to achieve the Sierra Club’s goals.

WILLIAM YRAGUI

RESIDENCE: Fremont

SIERRA CLUB MEMBER SINCE: 2012

ACTIVITIES: Member, SF Bay Chapter Transportation, Compact Growth, & Outreach Committees; Chair, Activities Committee; Secretary, East Bay Public Lands & EBRPD Environmental Round Table; Co-Founder, Mission Peak Conservancy



STATEMENT: The Sierra Club needs energetic advocates to protect our parks, agricultural lands, and native species. This year, I worked with Club leaders to modify an Alameda County Microbrewery Ordinance to promote agricultural products, including wine and beer, in Palomares Canyon, Sheridan Road, and Sunol. I worked with the Sierra Club Tri-Valley and Southern Alameda Groups to oppose the dumping of contaminated dirt by enacting a Dirt Dumping Ordinance. I also previously worked to close the Lake Chabot gun range, thereby reducing lead exposure.

Through the Mission Peak Conservancy, I championed the installation of drinking water at EBRPD parks and the installation of six additional toilets at Mission Peak. I successfully lobbied for the conversion of Morrison Canyon Road into a scenic hiking and biking trail.

I support more multiuse paths, longer park hours and well-maintained trails. We need to complete the East Bay Greenway, Niles Canyon, Bay Ridge, and Bay Trails by engaging the public in Hayward, San Lorenzo, Union City, Sunol, Newark, and Fremont. Safe paths protect families recreating, churchgoers, shoppers, and commuters. Climate change is real and encouraging bike and pedestrian use reduces greenhouse gases leading to healthier people. I support the efforts of HARD and HASPA to address sea level rise along the Bay shoreline to protect Hayward, San Lorenzo, and Union City.

As a hike leader with the Sierra Club, I lead monthly moonlight hikes. I believe the Southern Alameda Executive Committee should stand up when homes are built on mudflats and warehouses on bay fill. Our group should support exercising compassion to our homeless and encourage dense housing near transit. I would sincerely appreciate your vote. Thank you.

TRI-VALLEY GROUP CANDIDATES

There is one candidate. You may vote for up to one.

DONNA CABANNE

SIERRA CLUB MEMBER SINCE: 1980

ACTIVITIES: Member, Tri-Valley Executive Committee



STATEMENT: The Tri-Valley faces many environmental challenges. If re-elected, I will focus efforts to maintain and strengthen Measure D, which protects open space and limits development. It is also critical that we purchase land to secure Tesla Park for generations to come. I will continue to work as a community monitor for the Altamont Landfill, ensuring public safety and emphasizing a reduction of waste materials at the source. This means asking businesses and schools, as well as households, to rigorously reduce their wastes. In addition, we need to support renewable energy sources and eliminate oil drilling and fossil fuel dependence in Alameda County. We need to work together on these ongoing short-term and long-term goals.

I welcome your feedback and encourage your participation! Please join us to make our valley a safer environment for our families, and for our future.

WEST CONTRA COSTA GROUP CANDIDATES

There are two candidates. You may vote for up to two.

LISA PARK

RESIDENCE: Richmond

OCCUPATION: Environmental Health Specialist

SIERRA CLUB MEMBER SINCE: 1981

ACTIVITIES: Vice Chair & Treasurer, West Contra Costa County Group; Volunteer, Chapter Office



STATEMENT: I am from Portland, Oregon, and have lived in the Bay Area for many years. I earned a BS from UC Berkeley in Forestry. Formerly a preschool teacher, I now work for Alameda County as an Environmental Health Specialist. I joined the Sierra Club many years ago because I loved the outdoors, especially the forests, and wanted to protect them. After Donald Trump won the election, I asked myself what I could do on a local level to counterbalance his agenda with one that advances justice, democracy, science, and environmental protection. I decided to volunteer for the Sierra Club. In January of 2017 I began working at the Chapter office reception desk on some Friday mornings and attending the monthly West Contra Costa County Group Executive Committee meetings. I began to learn about how the Sierra Club works and about environmental issues in West County. Then I became the Vice Chair of the Group, and later the Treasurer, too. I became involved with No Coal in Richmond, and for that group have attended Richmond City Council meetings, helped plan events, and organized and manned Sierra Club/No Coal in Richmond booths at Richmond festivals. I ask for your vote in order that I may continue work as Treasurer and Vice Chair of the West Contra Costa Group.

I hope Club members from West County will join the group, whether as active volunteers or attendees of our monthly meetings. We have lots of possible environmental focus points in our area:

Regarding the Climate Emergency, West County is the place to Think Globally, Act Locally!

CESAR ZEPEDA

RESIDENCE: Richmond

OCCUPATION: Consultant

SIERRA CLUB MEMBER SINCE: 2015

ACTIVITIES: Past Chair, Sierra Club Environmental Justice Committee; Current Chair, West County Executive Committee; Member, AB617 Air Quality Monitoring, West County



STATEMENT: I have been active in my community, building a sense of community and creating a healthy environment for most of my adult life. I have been improving the conditions on our current parks and open spaces, such as maintenance; and developing parks and open spaces in all neighborhoods, especially lower-income neighborhoods which currently do not have access, to ensure equitable distribution of these community resources.

I am the current Chair of the West County Group, bringing new energy and ideas to help our communities. I have a personal goal of "100 trees by 2020"; this is to plant 100 trees, minimum, in my neighborhood by the end of the year. I would love to work with other communities to do the same. I take every opportunity I get to help my community, which is why I became a member of the AB617 Air Quality Monitoring group in Richmond. This is to help our community move towards cleaner and healthier air for all.

As a minority, being a gay Latino, I understand the struggles and issues affecting our communities. I speak Spanish and can help outreach to the Latino community, which is a growing community in California; however, they are not as involved in the environmental movement. Let's change that!

I am involved in EJ all around the Bay Area, having helped lower income communities plant trees and plants around their neighborhood and schools.

As Director of the West County Wastewater District, we are working on a "One-Water" concept to help people understand water conservation.

Thank you. I would be honored to be able to earn your vote, to continue working for our community and environment!

2019 Sierra Club SF Bay Chapter Election Ballot

Please vote for the Chapter Executive Committee and your group Executive Committee. For instructions on voting and submitting your ballot, see page 23. If you prefer to vote online, visit <https://www.sierraclub.org/san-francisco-bay/2019-chapter-elections>.

Mark your ballot with black or blue ink. Please make your selections legible and keep your marks within the boxes. If you miscalculate your ballot, you may make a correction in a manner that clearly indicates your intended vote. Candidate names have been listed in random order.

CHAPTER EXCOM (vote 5 or fewer)	SINGLE OR FIRST JOINT	SECOND JOINT
Igor Tregub		
Chance A. Cutrano		
Gabriel Quinto		
Norman La Force		
Max Perrey		
John Rizzo		

NORTHERN ALAMEDA COUNTY GROUP EXCOM (vote up to 5)	SINGLE OR FIRST JOINT	SECOND JOINT
Andy Katz		
Alex Sharenko		
Suzanne Merkelson		
Nancy Rader		
Xavier Johnson		
Patricia Lamborn		
Melinda Howard-Herrate		
Lucy Claire Curran		
Sophie Hahn		

SOUTHERN ALAMEDA COUNTY GROUP EXCOM (vote up to 2)	SINGLE OR FIRST JOINT	SECOND JOINT
William Yragui		
Jewell (Hargleroad) Spalding		
Toni Pryor Wise		

MARIN GROUP EXCOM (vote 5 or fewer)	SINGLE OR FIRST JOINT	SECOND JOINT
Chance A. Cutrano		
Judy Schriebman		
Judith Rogers		
Louis Nuyens		
Jinesse Reynolds		

WEST CONTRA COSTA GROUP EXCOM (vote up to 2)	SINGLE OR FIRST JOINT	SECOND JOINT
Lisa Park		
Cesar Zepeda		

SAN FRANCISCO GROUP EXCOM (vote up to 5)	SINGLE OR FIRST JOINT	SECOND JOINT
Howard Strassner		
John Rizzo		
Hunter Cutting		
Arthur Feinstein		
Barry Hermanson		

MT. DIABLO GROUP EXCOM (vote up to 2)	SINGLE OR FIRST JOINT	SECOND JOINT
Richard Cohen		
Jonathan Bash		

TRI-VALLEY GROUP EXCOM (vote up to 1)	SINGLE OR FIRST JOINT	SECOND JOINT
Donna Cabanne		



MOONLIGHT HIKE ON MISSION PEAK.

Leon H. snapped this photo of Sierra Club members enjoying a meditative September night before ascending Mission Peak. For a chance to see your snapshot to be featured in the next issue of the *Yodeler*, share pictures on Twitter, Instagram, or Facebook with hashtag [#SierraSnapshots](#), or email photos to yodedit@sfbaysc.org. Please tell us where and when it was taken and include the names of anyone in the photo.

FOLLOW US ON SOCIAL MEDIA!

Facebook.com/SierraClubSFBayChapter

Twitter @SFBaySierraClub

Instagram @SierraClub_SFBay

SIERRACLUB.ORG/SFBAY

Our website is home to helpful information and resources, including:

- The *Yodeler* blog, updated regularly
- Our full events and activities calendar
- Group information and leadership roster

ANNOUNCEMENTS

- Chapter holiday party on Dec 13 (p. 3)
- Members: Vote for your local Sierra Club representatives by Dec 13 (p. 18)
- Volunteer to plant a tree in Oakland (p. 3)
- Next Wilderness First Aid class will be held Jan 18-19 (p. 23)

EMAIL

Visit sierraclub.org/sfbay/email to sign up for Bay Chapter emails, including monthly bulletins and action alerts.